

LSGI - SCRI Joint Distinguished Lecture

Urban Informatics & Smart Cities

Date: 29 March 2021 (Mon)

Time: 4:00pm - 5:00pm

Venue: Online@Zoom

Language: English

Speaker: Prof. John Wen-zhong SHI, Chair Professor in GISci and Remote Sensing, LSGI, Director of Smart Cities Research Institute, PolyU

Open Lecture Mar 29th 2021



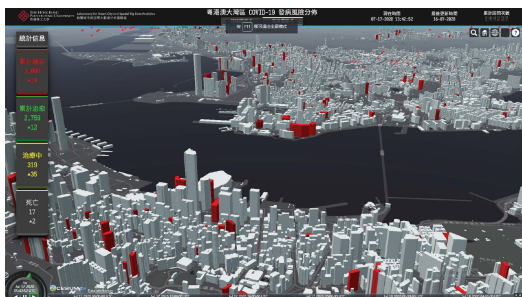
Urban Informatics & Smart Cities



SHI Wenzhong, John
Director, Smart Cities Research Institute
Chair Professor, Department of Land Surveying and Geo-Informatics
The Hong Kong Polytechnic University



In his talk, Prof. Shi highlighted the territory's great potential for becoming an international leading innovation centre in urban informatics, which is the technology foundation for Smart Cities, with a comprehensive overview of its existing research strengths related to urban informatics, including GIScience, remote sensing and satellite positioning, artificial intelligence, urban planning, urban policy and geography, as well as urban and regional studies.

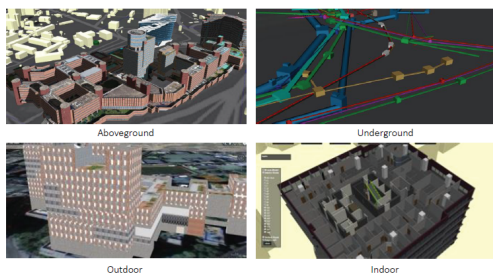


Buildings with confirmed COVID-19 cases in the Guangdong-Hong Kong-Macao Greater Bay Area

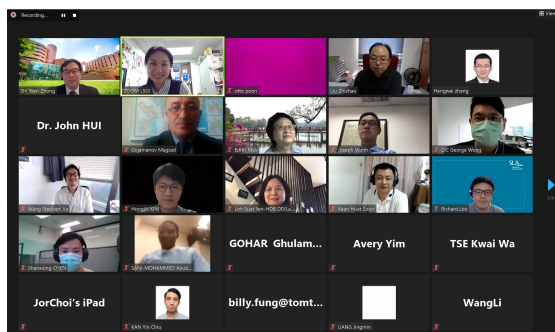


Indoor and outdoor integrated point-to-point 3D navigation (Hong Kong Polytechnic University campus)

Digital Platform for Smart Cities
Spatial Data Infrastructure



Spatial Data Infrastructure developed by Prof. Shi and his research team



A capture of some of participants of the lecture