



Phone : 3628 8962  
Ref.: AL/PG 5/2009

12 October 2009

Department of Land Surveying & Geo-Informatics  
The Hong Kong Polytechnic University  
Hung Hom  
Kowloon  
Hong Kong

Dear Sir

**2009 Hong Kong Advanced Level Examination  
Copyright – Geography**

For the 2009 Hong Kong Advanced Level Examination (AL), a quotation was taken from a publication of which, I understand, you are the copyright holder. The details are as follows:-

AL Subject	Question No.	Publication from which the quotation was taken	Year of Publication
Geography (Paper 1)	No. 11	<a href="http://www.lsgi.polyu.edu.hk/RSRG/resources/News/2nd_ws/present/nichol_p.pdf">www.lsgi.polyu.edu.hk/RSRG/resources/News/2nd_ws/present/nichol_p.pdf</a>	20-21 May 2008

A copy of the question paper is enclosed. Because of the need to preserve examination secrecy, it was not possible to contact you earlier.

I should be grateful if you would grant us permission, to include extracts from the above article in the question papers that the Authority will make available for sale to the general public later this year. As the prime purpose of these publications is to inform interested parties about the examination rather than to make profit, we hope you will be able to grant us permission to include extracts from the above article without any royalty payment. Details of the publication are as follows:-

**Title:** 2009 Hong Kong Advanced Level Examination - Question Paper - A-Level Geography (available in both English and Chinese versions and the Chinese version is an exact translation of the English version)

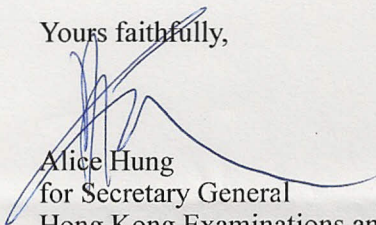
**Publisher:** Hong Kong Examinations and Assessment Authority (a non-profit making organization established by law to conduct specified public examinations in Hong Kong)

**Price:** Not yet available

An information sheet concerning the special nature of this request is attached for your reference.

Should there be any queries, please feel free to contact us by email at [al@hkeaa.edu.hk](mailto:al@hkeaa.edu.hk). I look forward to receiving your favourable reply.

Yours faithfully,

  
Alice Hung  
for Secretary General  
Hong Kong Examinations and Assessment Authority  
Encl.



Hong Kong Examinations & Assessment Authority  
Information Sheet – Use of Copyright Material

If you have not previously received a request from the Hong Kong Examinations and Assessment Authority for the use of copyright material, you will find the following information relevant :

- The Authority is a non-profit making public body established by Government Ordinance to run the public examination system in the Special Administrative Region of Hong Kong.
- The cost of the back-dated question paper books in which your material will appear is kept low, as the purchasers are virtually all secondary (high) school students. The books are published primarily as a service for the convenience of students and teachers. Any profits from the sales help to keep down the level of examination fees.
- Each examination subject usually consists of two or more papers. Typically, the copyright material from any one source occupies less than 1% of the book.
- Virtually all Hong Kong students prepare for examinations by conscientiously working through the papers from previous years' examinations. This means that if the copyright material is taken from a magazine available in Hong Kong, this is an excellent form of very effective free advertising.
- The publishers of a number of reputable magazines acknowledge the point made in the previous paragraph and grant the Authority free use of their copyright material.
- There is a recognized international convention which allows examination bodies to use copyright material in examination question papers without obtaining prior permission – such an arrangement is necessary to preserve the secrecy of the questions.
- It is the practice of the Authority to acknowledge the source of all copyright material in its back-dated question paper books.

11. Aerial Photograph 11a shows part of the Kowloon Peninsula. Figure 11b shows the spatial pattern of land surface temperatures of this area on a winter night.

**Aerial Photograph 11a**

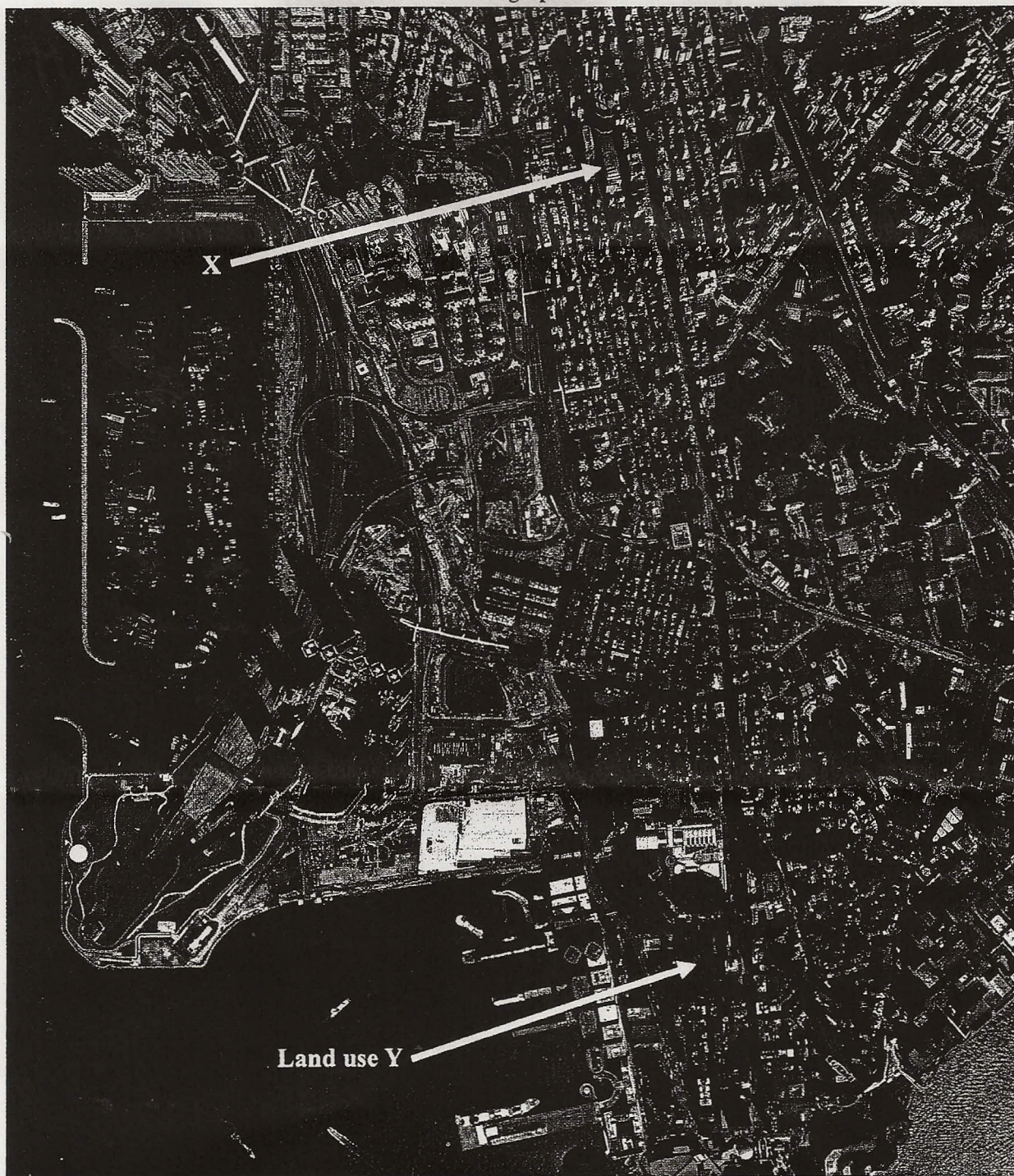
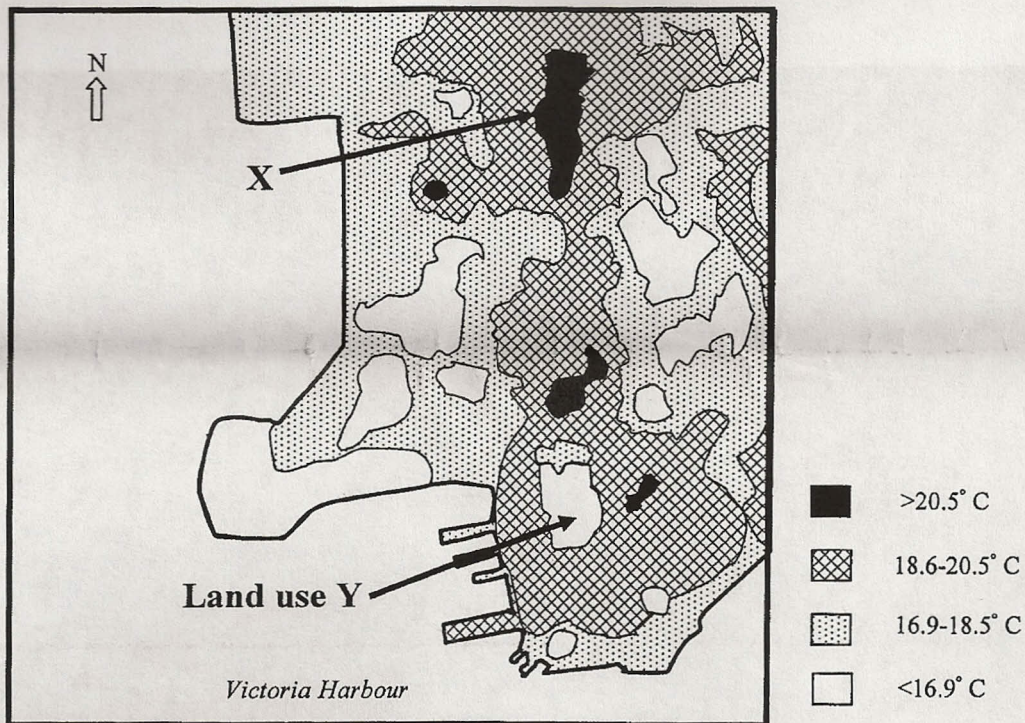


Figure 11b



- (a) Describe the spatial pattern of the land surface temperatures shown in Figure 11b. (4 marks)
- (b) What kind of atmospheric phenomenon occurred in the area around X? (1 mark)
- (c) Based on the evidence found in the aerial photograph, explain the occurrence of this phenomenon. (6 marks)
- (d) Explain how land use Y may relieve this phenomenon. (3 marks)
- (e) What other measures can be carried out by the government in order to relieve this phenomenon? (3 marks)
- (f) Discuss the difficulties that may be faced by the government in carrying out the measures. (3 marks)

END OF PAPER

Sources of materials used in this paper will be acknowledged in the *Examination Report and Question Papers* published by the Hong Kong Examinations and Assessment Authority at a later stage.