

INTRODUCTION TO KADOORIE FARM & BOTANIC GARDEN (KFBG) GIS DATA MODEL

By Alfred Lam
Senior Officer of Flora Department
Kadoorie Farm & Botanic Garden
30th Sept, 2011.

1 Background

2 KFBG GIS Data Model

3 Applications

3-1 CAD integration in seed growing area

3-2 SLA Management with relationship class

3-3 Raster Management

3-4 Collection of canopy reflectance data

1-1 KFBG Location



1-1 KFBG Location

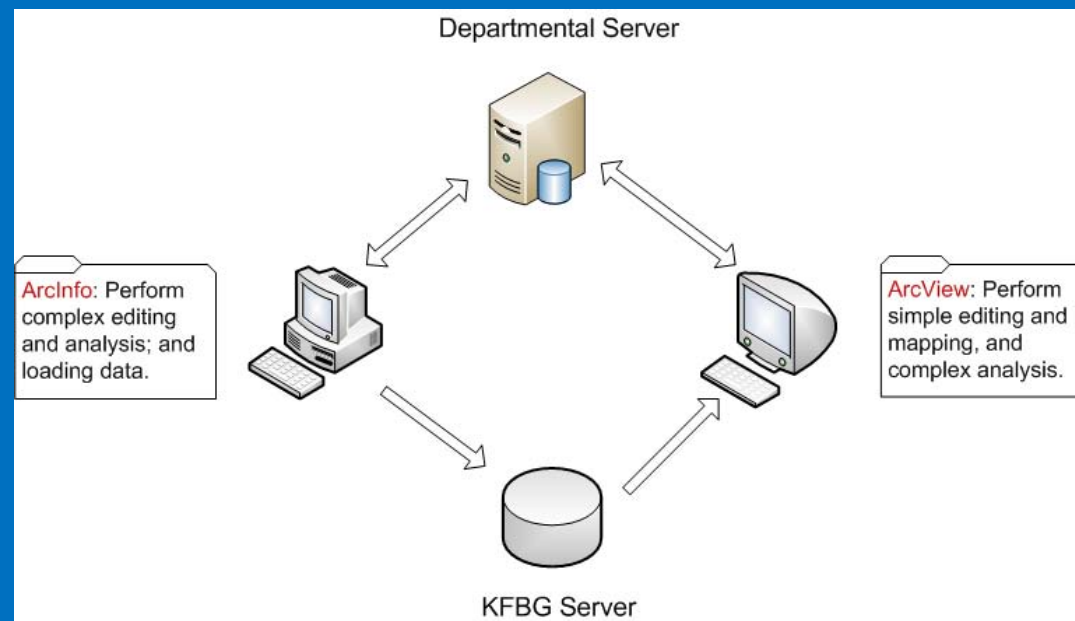


1-1 KFBG Map

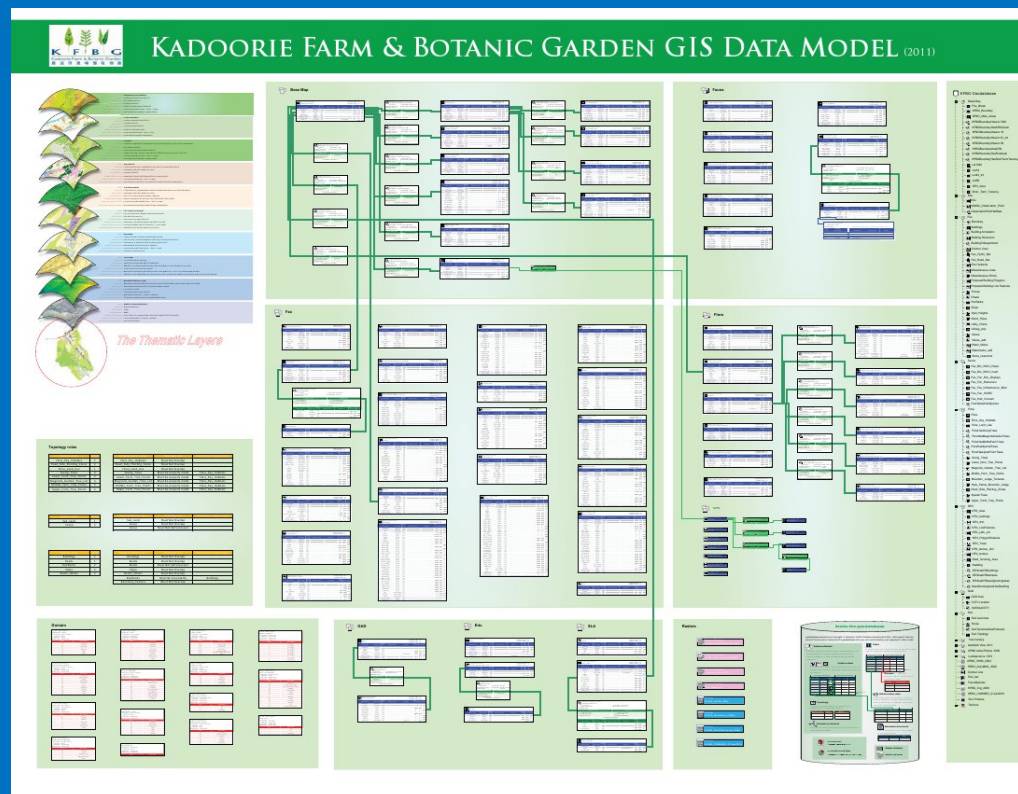


1 – 2 GIS in KFBG

- 1) ArcView 2
- 2) ArcInfo 1 (since June-2011)



2 KFBG GIS Data Model



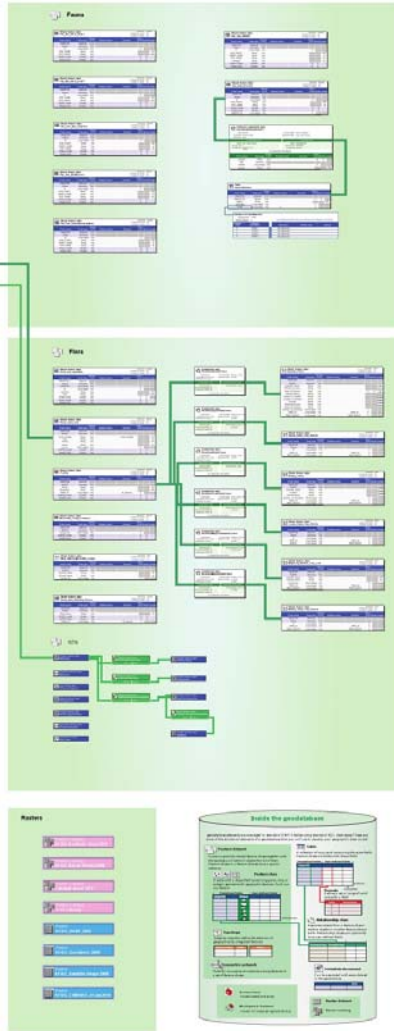
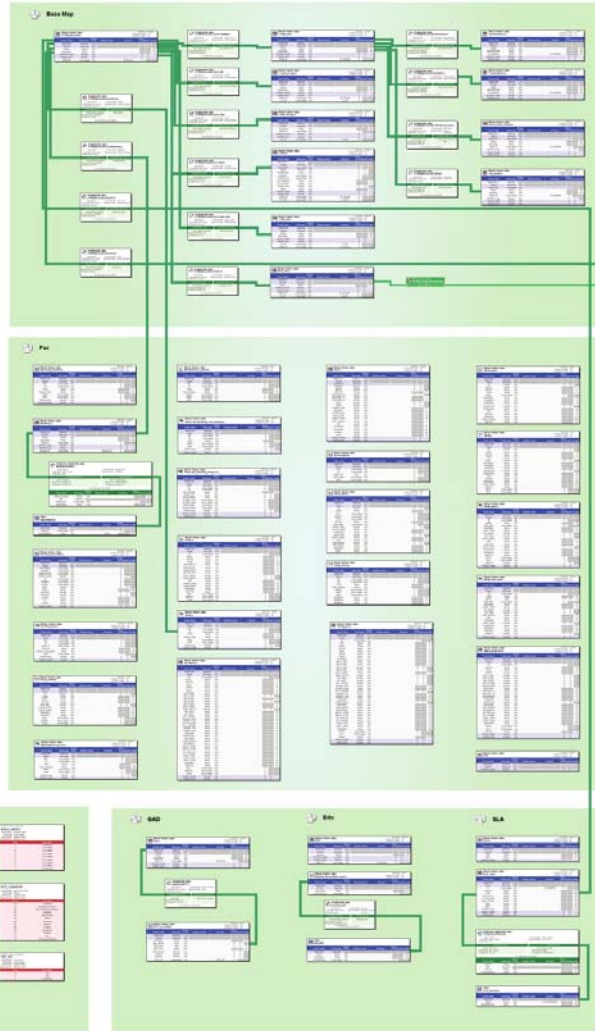


KADOORIE FARM & BOTANIC GARDEN GIS DATA MODEL (2011)



Topology rules

Rule Name	Rule Description	Severity
Must not overlap	Must not overlap	Warning
Must not touch	Must not touch	Warning
Must be unique	Must be unique	Warning
Must be valid	Must be valid	Warning
Must be a surface	Must be a surface	Warning
Must be a line	Must be a line	Warning
Must be a point	Must be a point	Warning
Must be a polygon	Must be a polygon	Warning
Must be a multipoint	Must be a multipoint	Warning
Must be a multipolyline	Must be a multipolyline	Warning
Must be a multipolygon	Must be a multipolygon	Warning
Must be a multipoint	Must be a multipoint	Warning
Must be a multipolyline	Must be a multipolyline	Warning
Must be a multipolygon	Must be a multipolygon	Warning



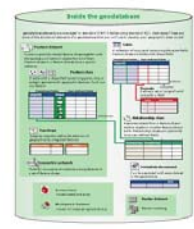
Domains

Field Name	Domain Name	Domain Values
...



Relations

Relation Name	Relation Description
...	...





KADOORIE FARM & BOTANIC GARDEN GIS DATA MODEL (2011)



The Thematic Layers

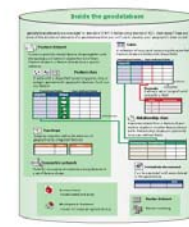
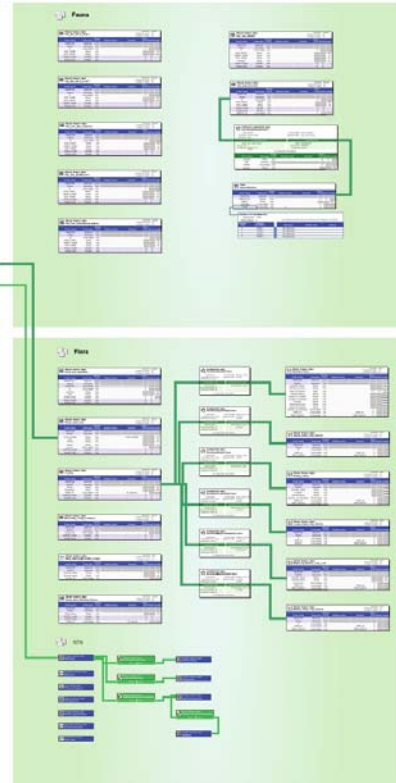
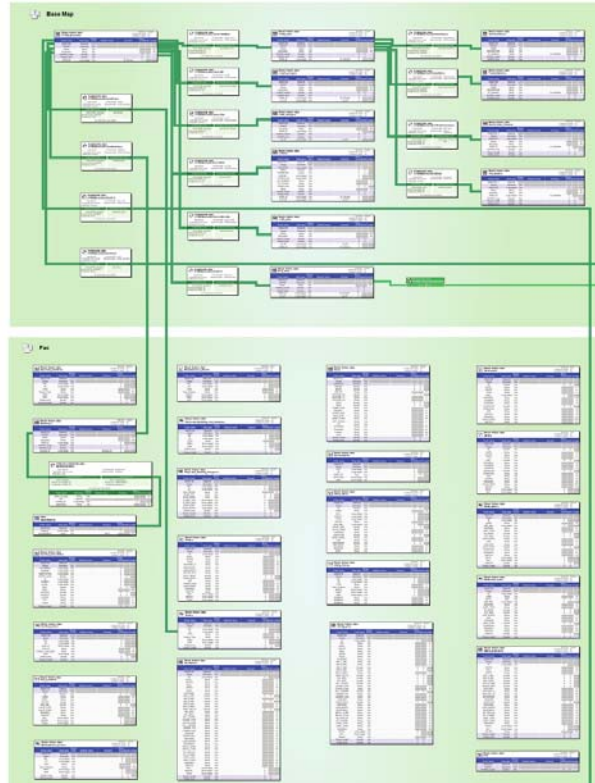
Topology rules

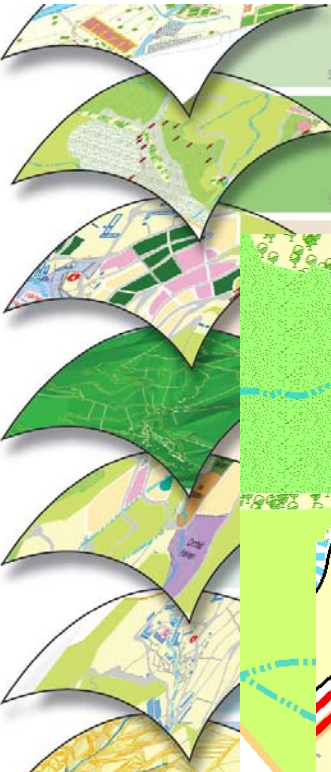
From	To	Rule
Area	Area	Must not overlap
Area	Line	Must not overlap
Area	Point	Must not overlap
Line	Line	Must not overlap
Line	Point	Must not overlap
Point	Point	Must not overlap

From	To	Rule
Area	Area	Must not overlap
Area	Line	Must not overlap
Area	Point	Must not overlap
Line	Line	Must not overlap
Line	Point	Must not overlap
Point	Point	Must not overlap

Domains

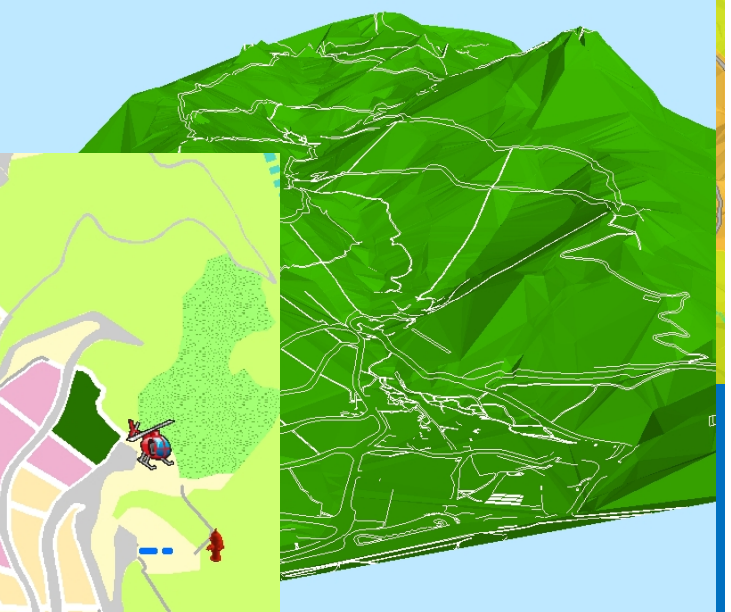
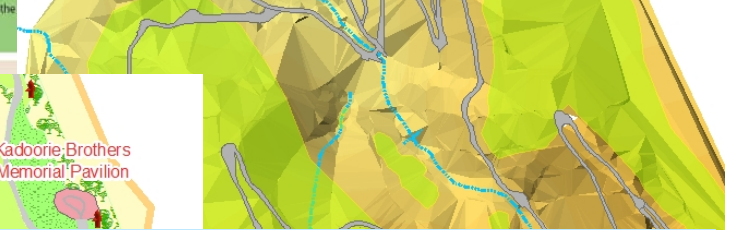
Field Name	Domain
Area	Area
Line	Line
Point	Point
Area	Area
Line	Line
Point	Point





Data Source: GPS data collection.
Representation: Point and polygon features.
Spatial Relationships: Related to KFBG land surface.
Map Scale and Accuracy: Typical map scale is from 1:50 to 1:1,000.
Symbology and Annotation: Symbolized according to classification.

Layer: Utilities
Map Use: Location of lights, fire hydrants, and other utilities; part of utility network analysis.
Data Source: GPS data collection.
Representation: Point, polyline, and polygon features.
Spatial Relationships: Related to KFBG surface. Point can be related to junctions on the
Map Scale and Accuracy: Typical map scale is from 1:50 to 1:2,000.
Symbology and Annotation: Symbolized according to classification.





KADOORIE FARM & BOTANIC GARDEN GIS DATA MODEL (2011)

Domain

Fauna

Simple feature class
Fau_Bio_Wld_Mergs

Field name	Data type	Allow nulls	Default value	Domain	Field Size	Scale	Length
OBJECTID	ObjectID	Yes					
Shape	Geometry	Yes					
S	Long Integer	Yes	0		50		
SITE_NAME	String	Yes			10		
SITE_FUNC	String	Yes			10		
SHAPE_LENGTH	Double	Yes	0		0	200	
SHAPE_AREA	Double	Yes	0		0	0	

Simple feature class
Fau_Bio_Wld_Invert

Field name	Data type	Allow nulls	Default value	Domain	Field Size	Scale	Length
OBJECTID	ObjectID	Yes					
Shape	Geometry	Yes					
S	Long Integer	Yes	0		50		
SITE_NAME	String	Yes			10		
SITE_FUNC	String	Yes			10		
SHAPE_LENGTH	Double	Yes	0		0	200	
SHAPE_AREA	Double	Yes	0		0	0	

Simple feature class
Fau_Fac_Edu_Diplays

Field name	Data type	Allow nulls	Default value	Domain	Field Size	Scale	Length
OBJECTID	ObjectID	Yes					
Shape	Geometry	Yes					
S	Long Integer	Yes	0		50		
SITE_NAME	String	Yes			10		
SITE_FUNC	String	Yes			10		
SHAPE_LENGTH	Double	Yes	0		0	200	
SHAPE_AREA	Double	Yes	0		0	0	

Simple feature class
Fau_Fac_Exttucons

Field name	Data type	Allow nulls	Default value	Domain	Field Size	Scale	Length
OBJECTID	ObjectID	Yes					
Shape	Geometry	Yes					
S	Long Integer	Yes	0		50		
SITE_NAME	String	Yes			10		
SITE_FUNC	String	Yes			10		
SHAPE_LENGTH	Double	Yes	0		0	200	
SHAPE_AREA	Double	Yes	0		0	0	

Simple feature class
Fau_Fac_Infrastructure_Misc

Field name	Data type	Allow nulls	Default value	Domain	Field Size	Scale	Length
OBJECTID	ObjectID	Yes					
Shape	Geometry	Yes					
S	Long Integer	Yes	0		50		
SITE_NAME	String	Yes			10		
SITE_FUNC	String	Yes			10		
SHAPE_LENGTH	Double	Yes	0		0	200	
SHAPE_AREA	Double	Yes	0		0	0	

Simple feature class
Fau_Fac_MARCC

Field name	Data type	Allow nulls	Default value	Domain	Field Size	Scale	Length
OBJECTID	ObjectID	Yes					
Shape	Geometry	Yes					
M	Long Integer	Yes	0		50		
SITE_FUNC	String	Yes			10		
ABREV_NAME	String	Yes			10		
SITE_NAME	String	Yes			10		
SHAPE_LENGTH	Double	Yes	0		0	200	
SHAPE_AREA	Double	Yes	0		0	0	

Simple feature class
Fau_Hab_Concerns

Field name	Data type	Allow nulls	Default value	Domain	Field Size	Scale	Length
OBJECTID	ObjectID	Yes					
Shape	Geometry	Yes					
M	Long Integer	Yes	0		50		
SITE_FUNC	String	Yes			10		
SITE_NAME	String	Yes			10		
SHAPE_LENGTH	Double	Yes	0		0	200	
SHAPE_AREA	Double	Yes	0		0	0	
HABITAT_ID	Long Integer	Yes	0		50		

Attributed relationship class
Fau_Bio_HabSpecies

Field name	Data type	Allow nulls	Default value	Domain	Field Size	Scale	Length
percent	Float	Yes	0		0	0	
hab	ObjectID	Yes					
habitat	Long Integer	Yes	0		50		
species	String	Yes			255		

Table
Fau_BatSpecies

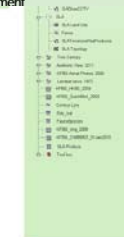
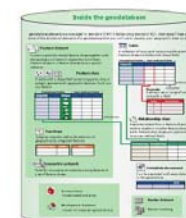
Field name	Data type	Allow nulls	Default value	Domain	Field Size	Scale	Length
OBJECTID	ObjectID	Yes					
HABITAT_ID	Double	Yes			0	0	
FAMILY	String	Yes			0	0	255
SPECIES	Long Integer	Yes	0		50		
TYPE	Long Integer	Yes	0		50		

Subtypes of FaunaSpecies

Subtype	TYPE	List of default values and domains for subtypes in this class
0	0	
1	TYPE 1	No values set
2	TYPE 2	No values set
3	TYPE 3	No values set
4	TYPE 4	No values set

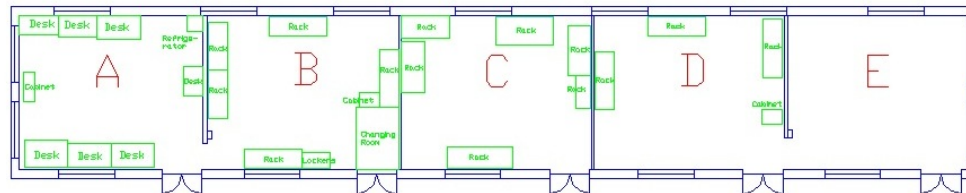
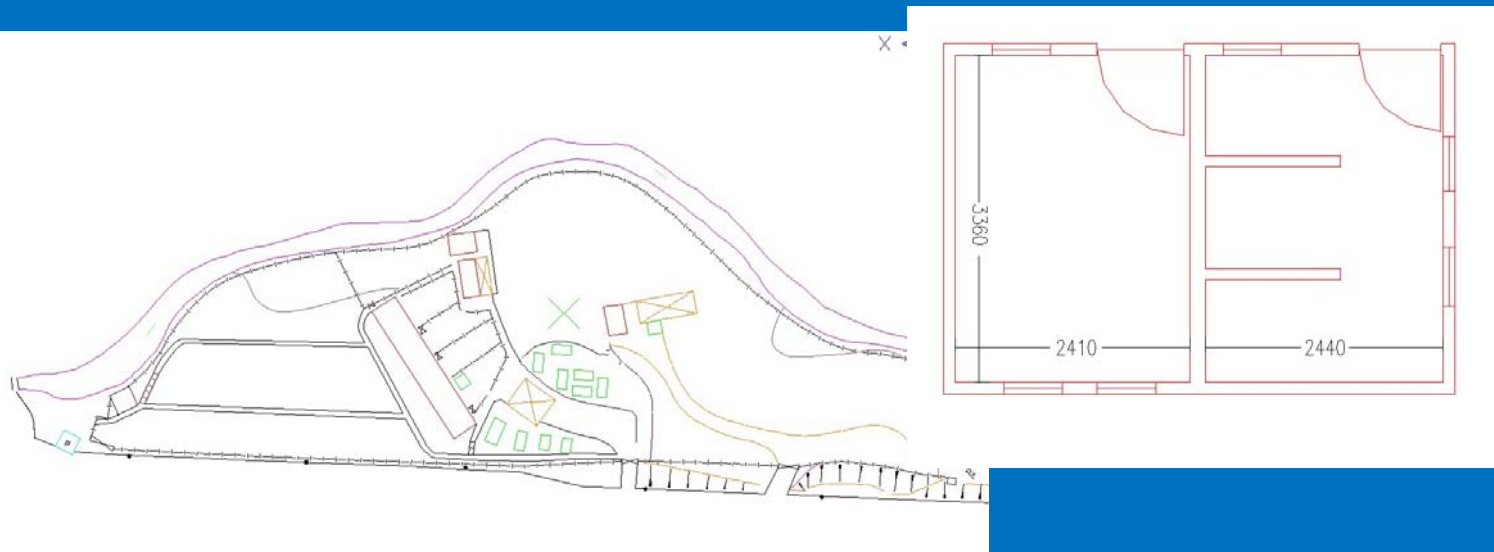
KFBG Geodatabase

- Base Map
 - Fire_Break
 - KFBG_Boundary
 - KFBG_Main_Areas
 - KFBGBoundary-HasLot 1822
 - KFBGBoundary-HasKFBGmain
 - KFBGBoundary-HasLot 18
 - KFBGBoundary-HasLot 43_44
 - KFBGBoundary-HasLot 56
 - KFBGBoundary-HasNTN
 - KFBGBoundary-HasFirebreak
 - KFBGBoundary-HasShortTermTenancy
 - Lot1822
 - Lot18
 - Lot43_44
 - Lot56
 - NTN_Area
 - Short_Term_Tenancy
- Edu
 - Edu
 - Wildlife_Observation_Point
 - ObservationPointHasBats
- Fac
 - Boundary
 - Buildings
 - Building Annotation
 - Building Dimension
 - BuildingToDepartment



3 Applications

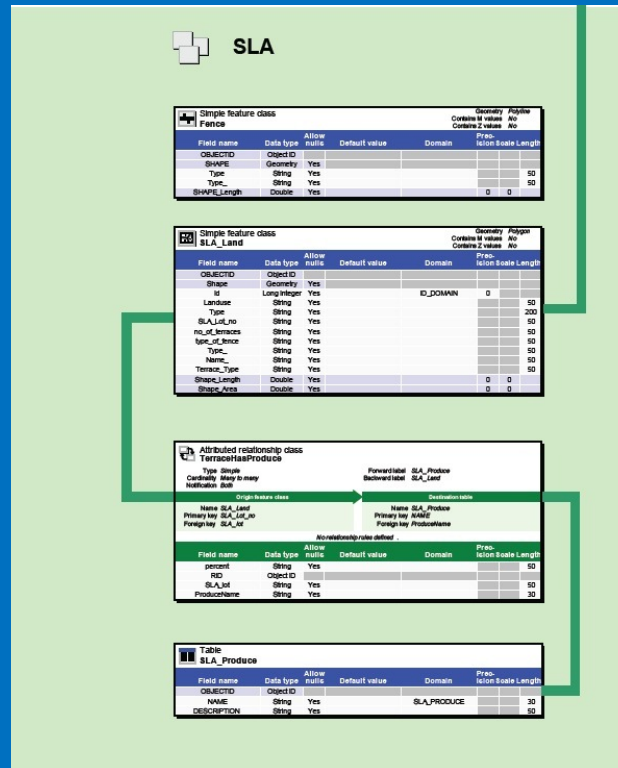
3-1 CAD File Integration







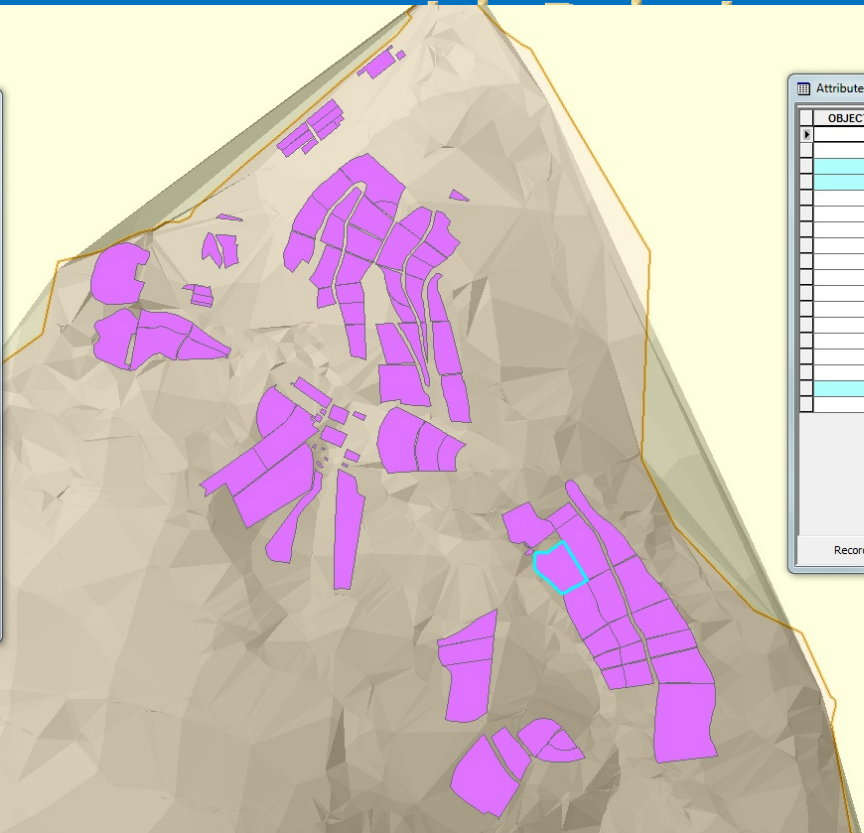
3-2 Management with Relationship Class



Selected Attributes of SLA_LandUse

Type	SLA_Lot_no*
Productive Orchard	125

Record: 1 Show: All



Attributes of SLA_prod...

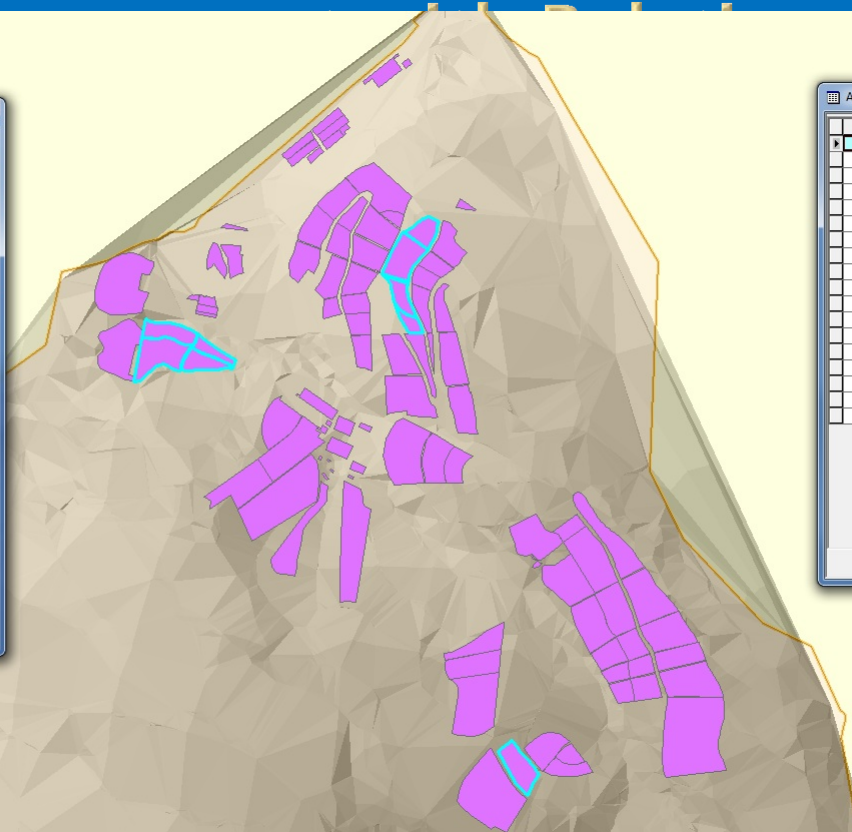
OBJECTID_1*	DESCRIPTION*
1	Guava
2	Banana
3	Pineapple
4	Citrus
5	Longan
6	Lychee
7	Green Tea
8	Coffee
9	Flower Tea
10	Pomelo
11	Wanpi
12	Macadamia Nut
13	Nectar Plant
14	Jack Fruit
15	Old Citrus
17	Others
18	Papaya
19	Old Tea Garden

Record: 1 10w:

Selected Attributes of SLA_LandUse

Type	SLA_Lot_no *
Productive Orchard	13
Productive Orchard	44 45
Productive Orchard	46
Productive Orchard	14
Non-Productive Orchard	14
Non-Productive Orchard	13
Productive Orchard	43
Non-Productive Orchard	43
Productive Orchard	108

Record: 1 | Show: All | lect



Attributes of SLA_pr...

OBJECTID_1 *	DESCRIPTION *
1	Guava
2	Banana
3	Pineapple
4	Citrus
5	Longan
6	Lychee
7	Green Tea
8	Coffee
9	Flower Tea
10	Pomelo
11	Wanpi
12	Macadamia Nut
13	Nectar Plant
14	Jack Fruit
15	Old Citrus
17	Others
18	Papaya
19	Old Tea Garden

Record: 1

Selected Attributes of SLA_LandUse

Type	SLA_Lot_no *
Tea	129
Productive Orchard	108
Productive Orchard	107
Tea	107
Productive Orchard	107

Record: 1 | Show: All | Object



Attributes of SLA_...

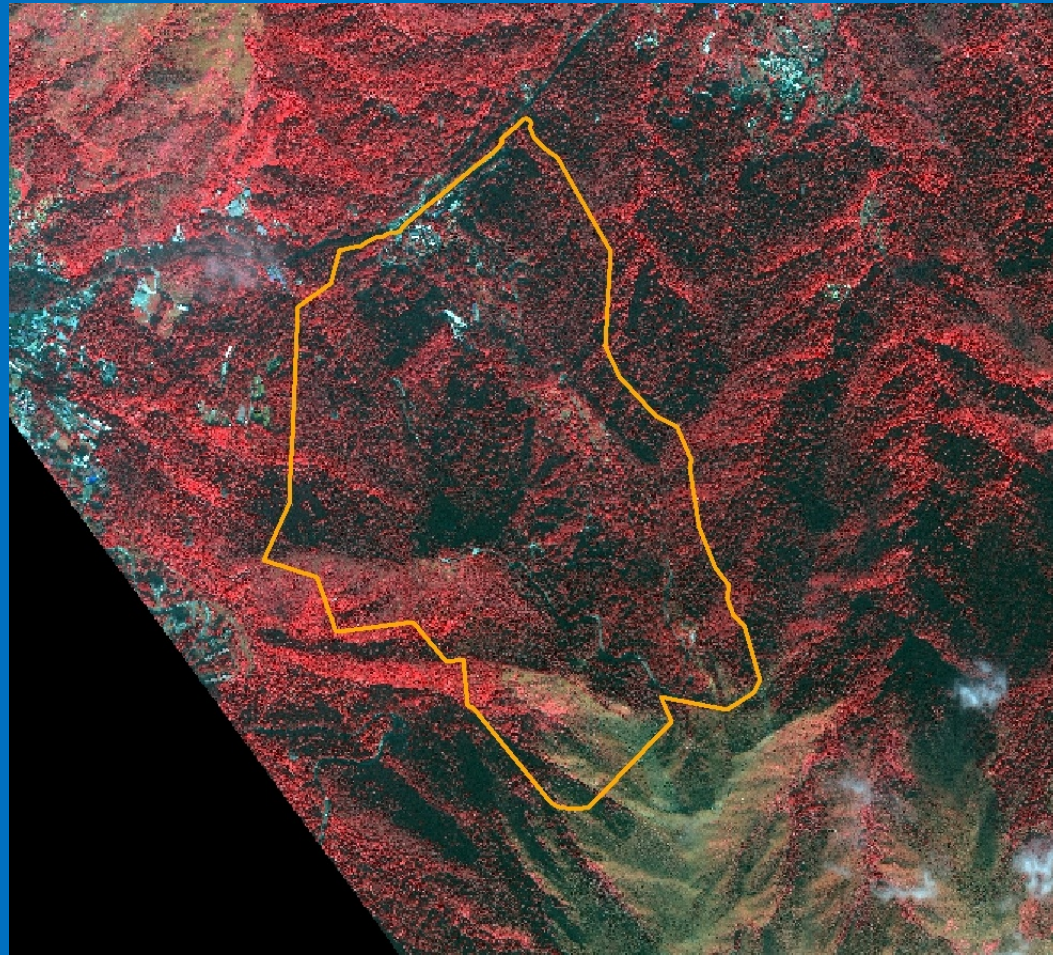
OBJECTID_1*	DESCRIPTION*
1	Guava
2	Banana
3	Pineapple
4	Citrus
5	Longan
6	Lychee
7	Green Tea
8	Coffee
9	Flower Tea
10	Pomelo
11	Wanpi
12	Macadamia Nut
13	Nectar Plant
14	Jack Fruit
15	Old Citrus
17	Others
18	Papaya
19	Old Tea Garden

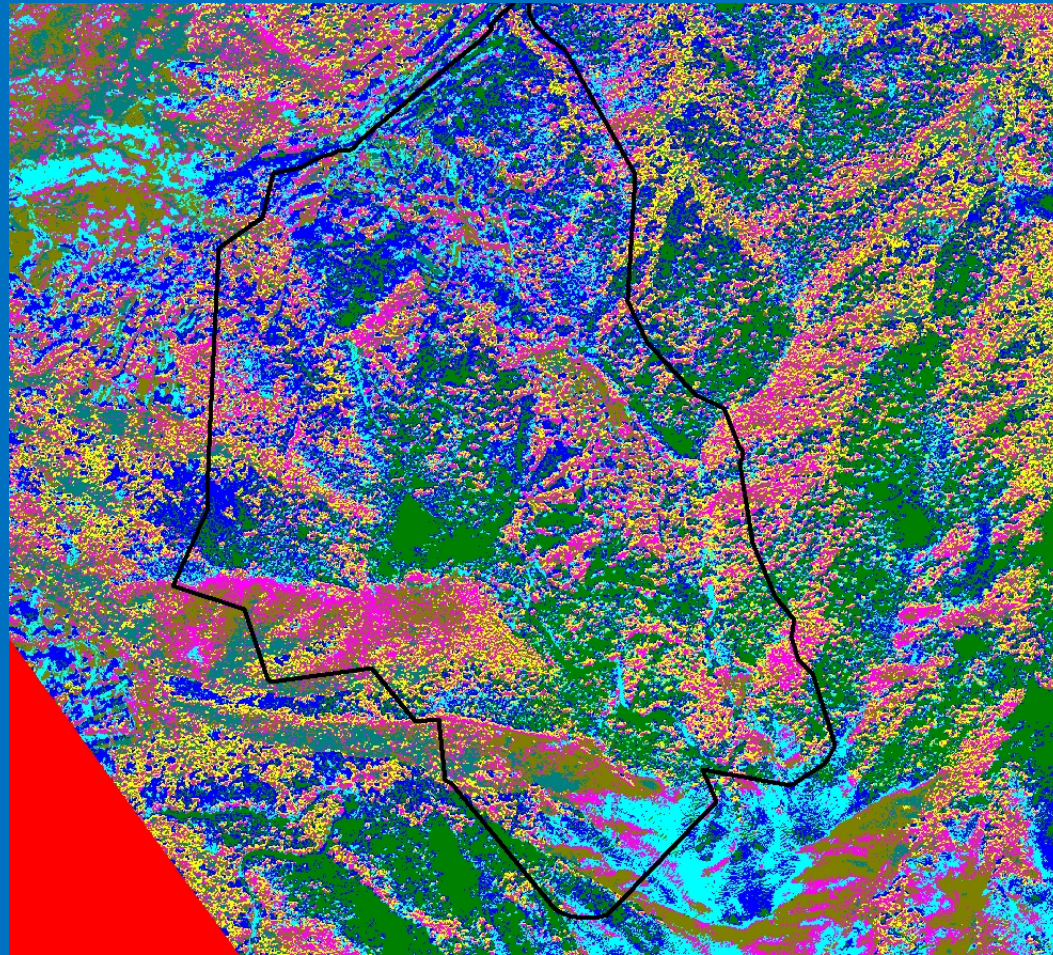
Record: 1

3-3 Raster Management

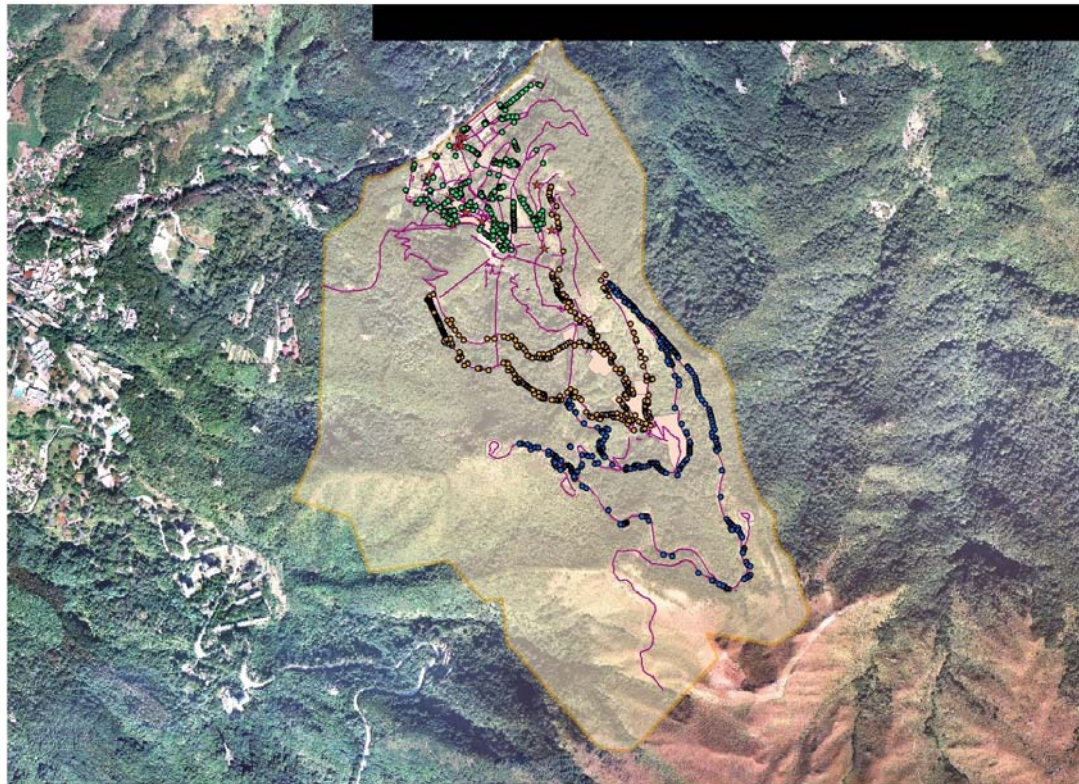
Rasters

- Raster Catalog
KFBG Aesthetic View 2011
- Raster Catalog
KFBG Aerial Photos 2009
- Raster Catalog
Landsat since 1972
- Raster Catalog
Tree Canopy
- Raster
KFBG HK80_2004
- Raster
KFBG Quickbird_2009
- Raster
KFBG_Satellite Image 2008
- Raster
KFBG_CW85853_01Jan2010

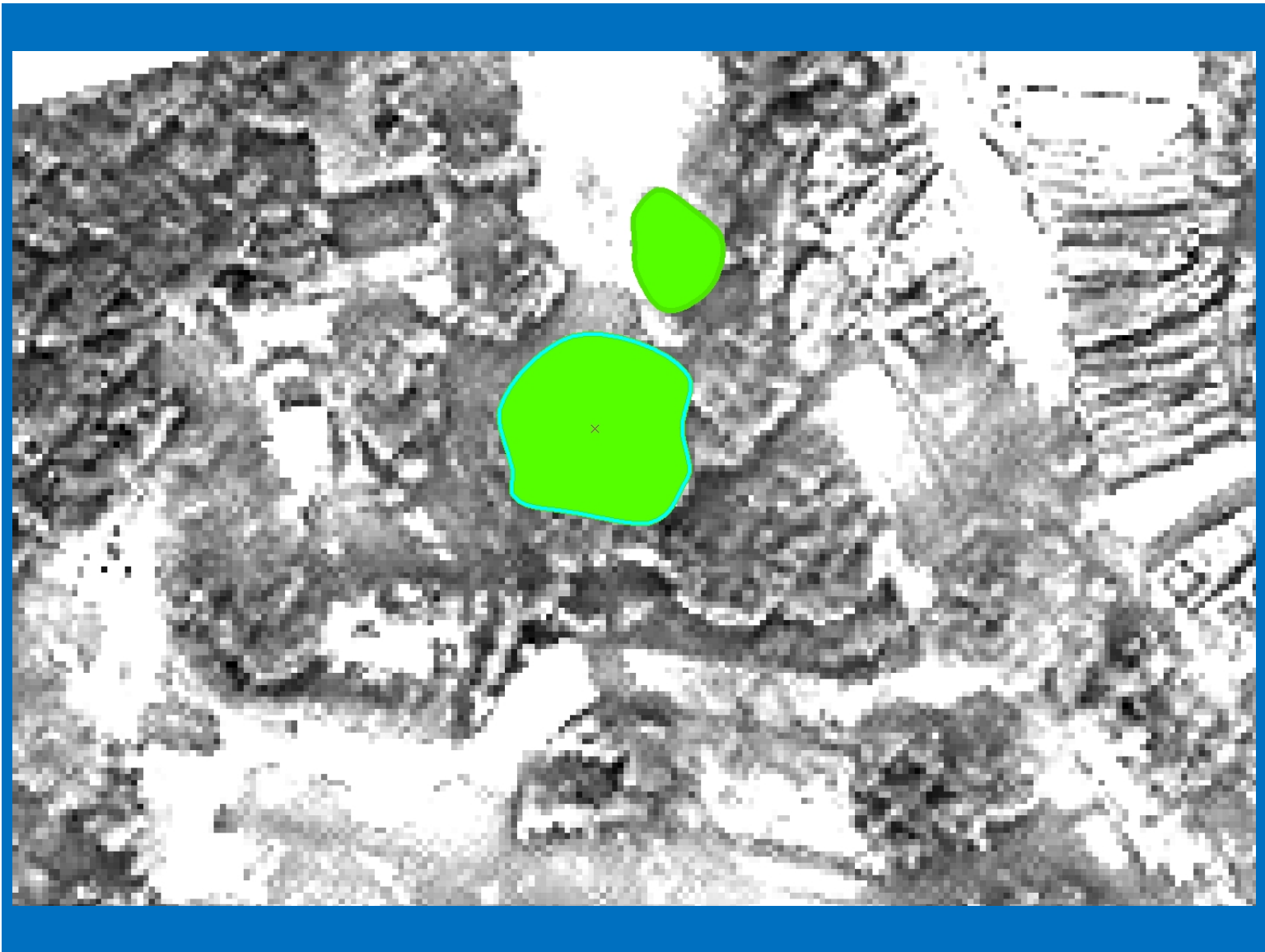


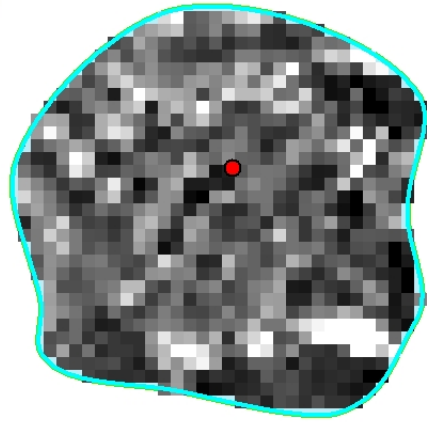
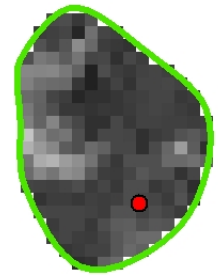
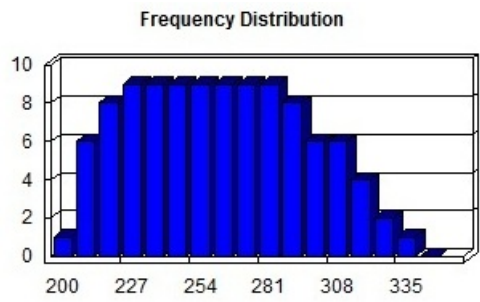


3-4 Collection of Canopy Reflectance Data









Thank You!