

GIS on Cloud Computing

Ken Leung

Assistant GIS Solution Manager

Individual System Server Specific Purpose

Data Management

Collect, Organize,
& Exchange Data



Planning & Analysis

Transform Data
Into Actionable
Information



Field Mobility

Get Information
Into and Out of
the Field



Visualization

Disseminate
Information Where
and When it is
Needed



Constituent Engagement

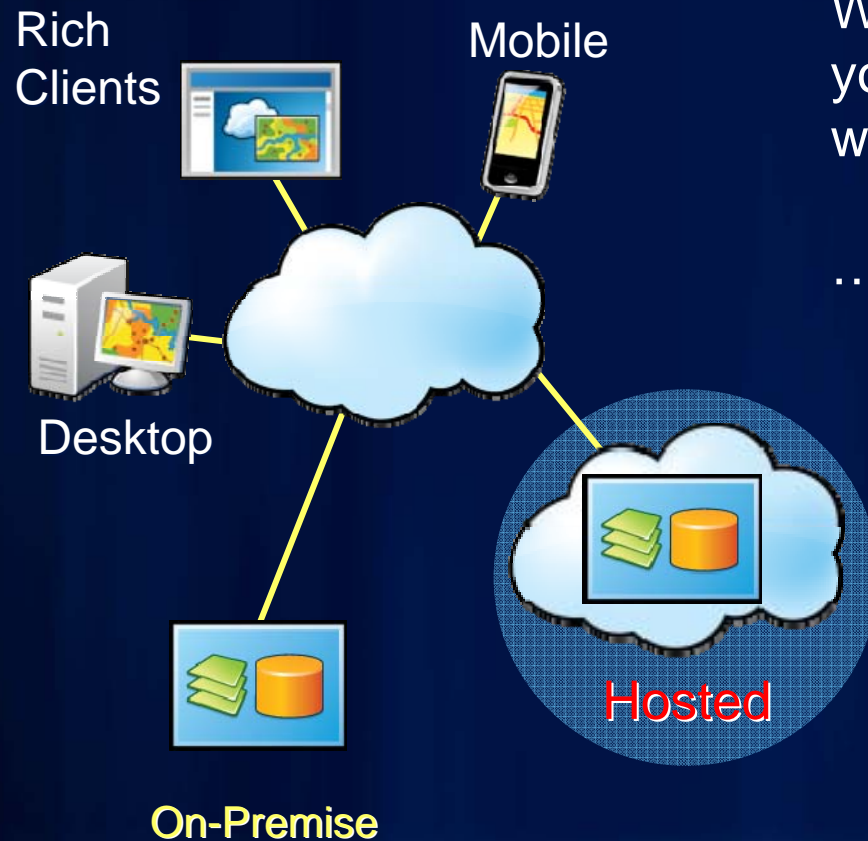
Get Feedback and
Make Informed
Decisions



Existing Market / Situation

- less time to spin up servers and capacity
- Easy to set up and administer
- Extremely fast release of web maps
- Non constraining for innovation
- Lowering Cost
- Simplicity
- Scalability

The Cloud is a Deployment Option

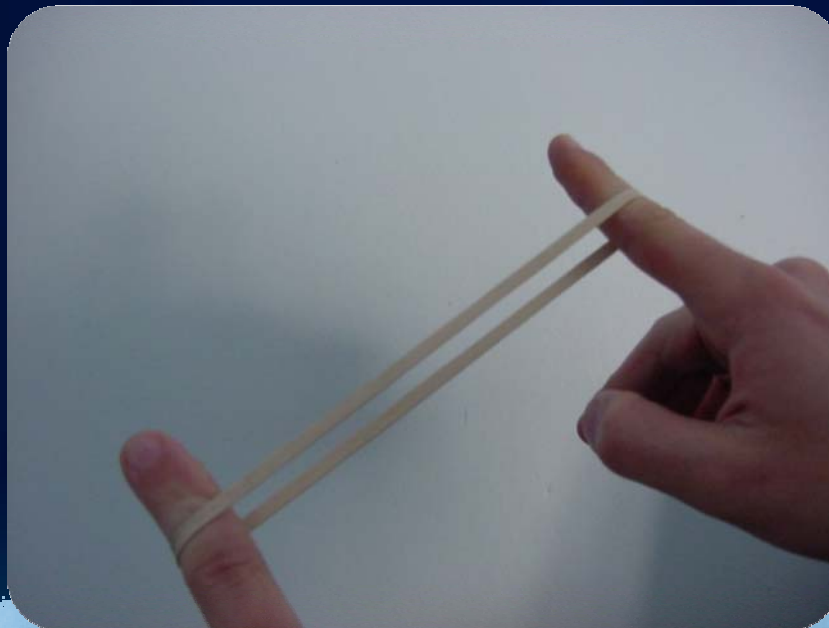


What part of IT is core to your mission critical workflows?

...is GIS part of it?

Elasticity:

”...the tendency of a body to return to its original shape after it has been stretched or compressed...”



Source: wordnetweb.princeton.edu, and Andy Hendrickson

Elasticity

- Can adjust for peaks and troughs in demand for...
- *Data Management*



Data Management

- High Availability w/ Web Map Server + EGDB

- Enhanced & Dynamic Processing -- Batch Data Processing, Large Scale *Analysis*



Analysis

- Cache cooking / Cache deployment
- Geocoding

Elasticity

- *Visualization & Mobile enablement*
 - Grow out capacity as needed
 - Expand capabilities in near real time
 - High Availability



Operational Awareness



Constituent Engagement



Mobile

Deployed How You Want

Aligning with the Maturity Of Your Organization

On Premises



Complimenting Existing Desktops & Servers

Traditional GIS Application

User



Desktop



Server



Online data

Data Management deployment to Cloud

User



Public
Or
Private



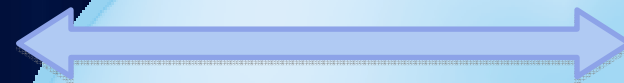
Desktop



Server



Online Data



Hybrid Deployment with Redundancy

*On-Premise
Data Management
& Analysis*



Desktop



Server



editing

Public
Or
Private



Server 1



Server 2



Server 3

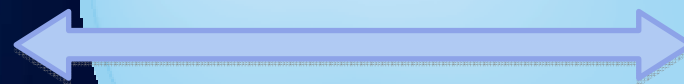


Server n

*Visualization
In Cloud*



Online Data



Deployment with redundancy

*On-Premise
User*



Public
Or
Private



Desktop



Server



editing



Server 1



Server 2



Server 3



Server n



Online Data

*Publication &
Visualization
In Cloud*

*Data Management
Data Publication & Analysis
In Cloud*

Hybrid Deployment with Redundancy

*On-Premise
Data Management
& Analysis*



Desktop



Server

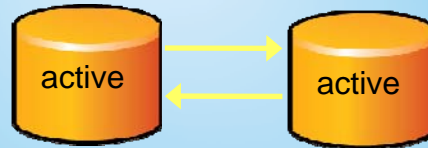


editing

Public
Or
Private



Server



2-way replication



Server 1



Server 2



Server 3



Server n



Online Data

*Publication &
Visualization
In Cloud*

*Data Publication
In Cloud*

Hybrid Deployment with Redundancy

*On-Premise
Data Management
& Analysis*



ArcGIS Desktop



ArcGIS Server



editing

Public
Or
Private



ArcGIS Server



passive



active

1-way replication

*Data Publication
In Cloud*



ArcGIS Server 1



ArcGIS Server 2



ArcGIS Server 3



ArcGIS Server n

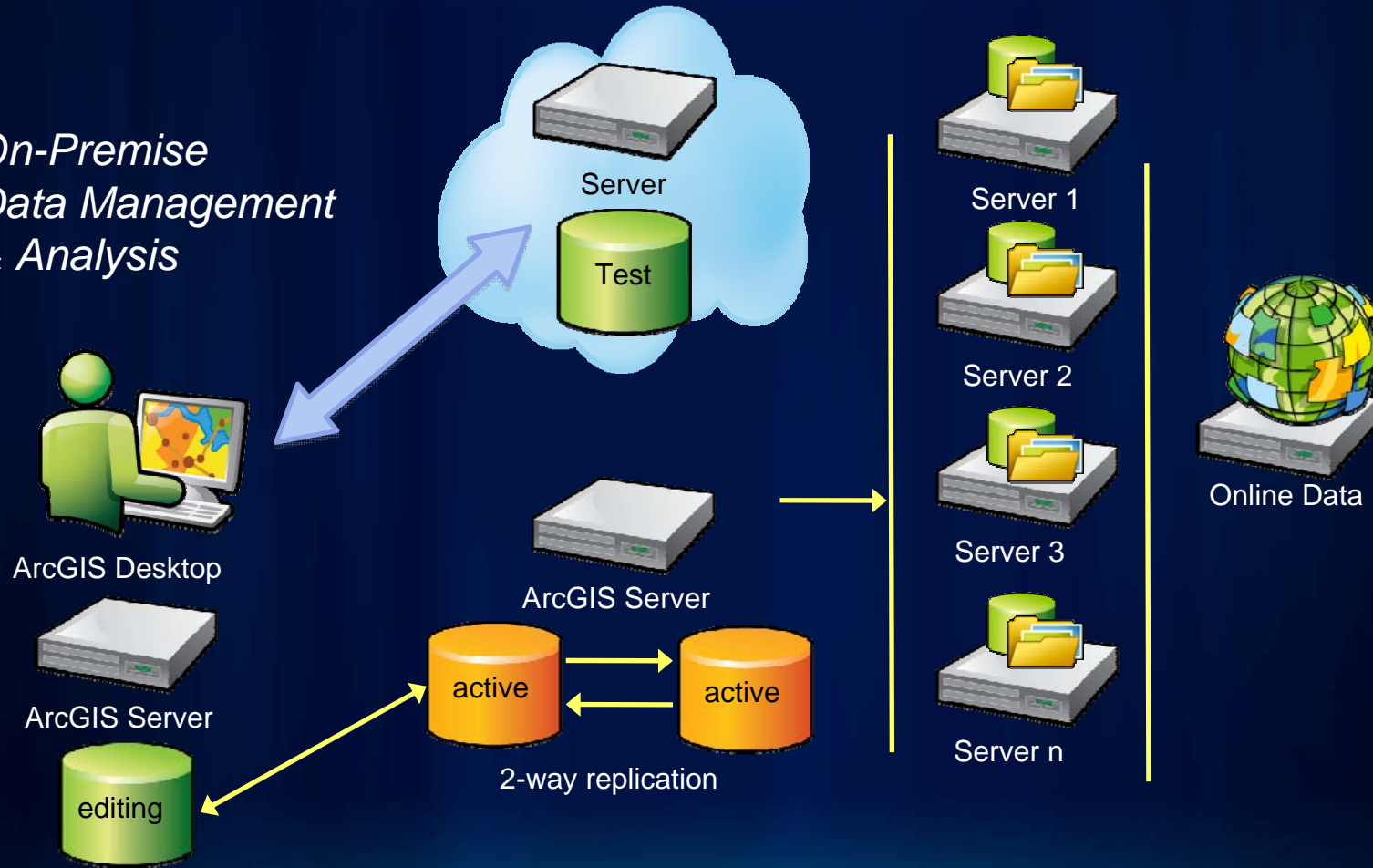


ArcGIS Online

*Publication &
Visualization
In Cloud*

Deployment with Test

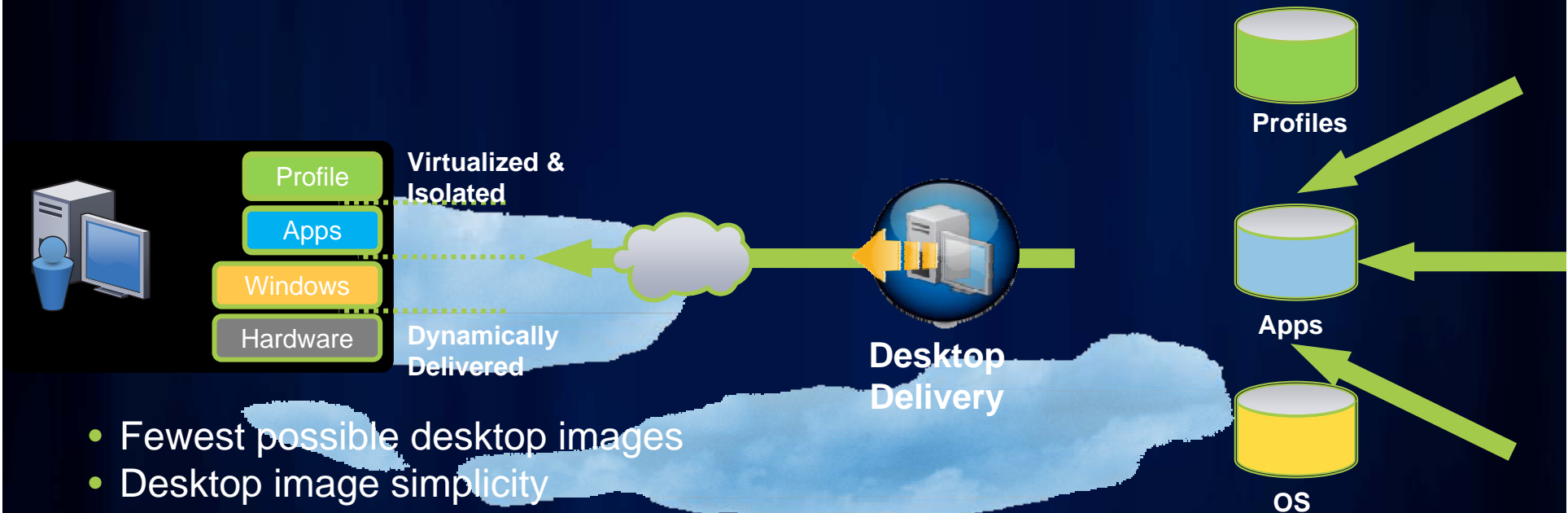
*On-Premise
Data Management
& Analysis*



Limit Risk

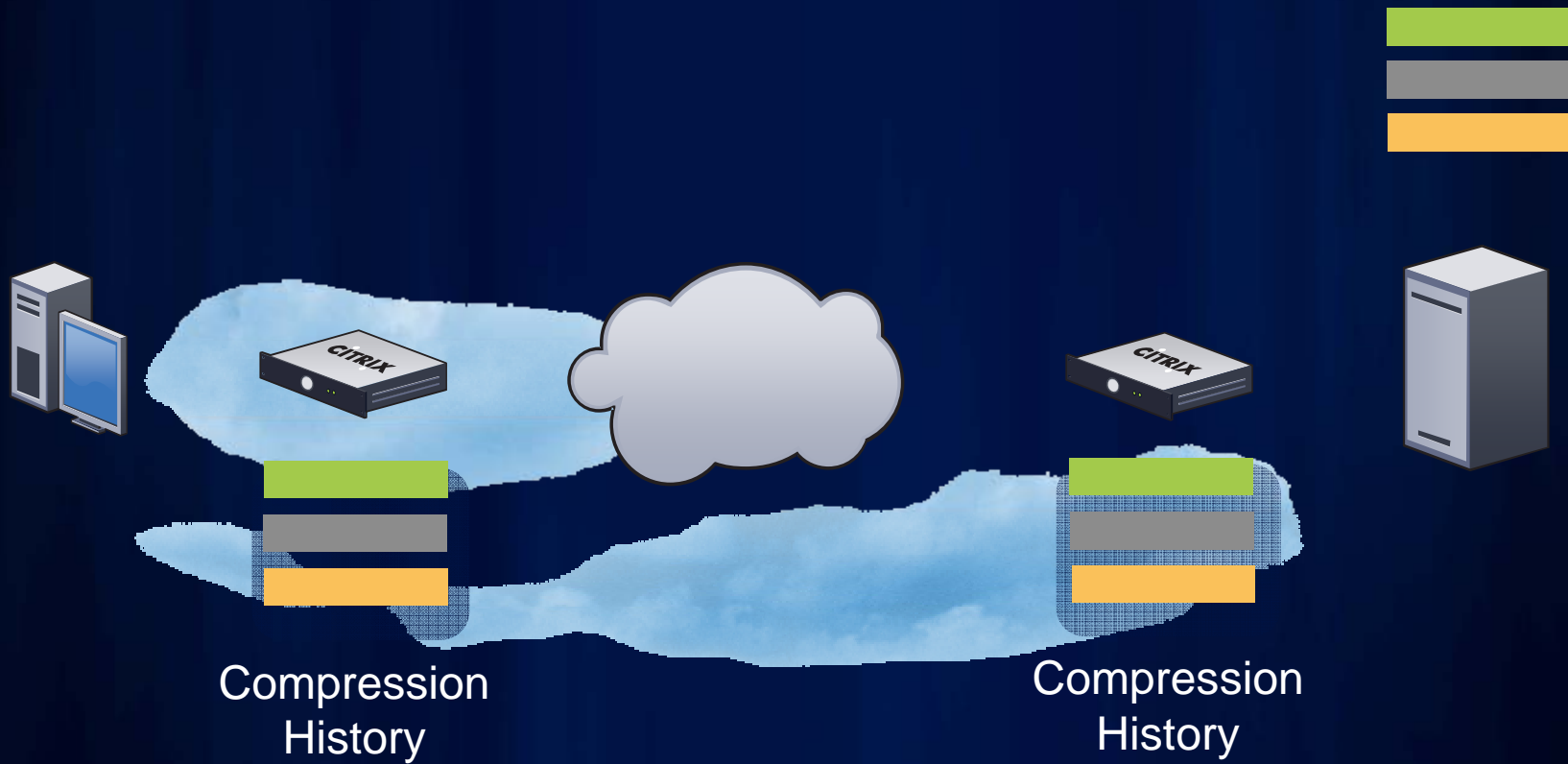
- Performance & Scalability
- The Cloud may not be reliable enough - you need to evaluate - SLA
- Is the the cloud secure enough?
- Real Utilization of owned equipment vs. rented

Application Delivery Optimization

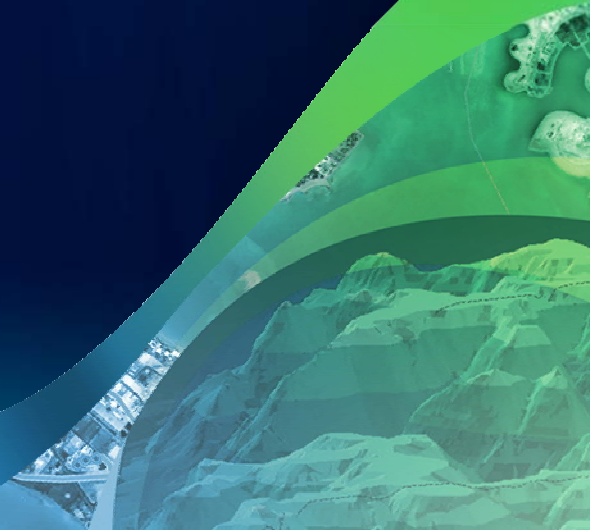


- Fewest possible desktop images
- Desktop image simplicity
- Fewer conflicts, minimized testing
- Low-touch, self-serve re-imaging

Application Delivery Optimization



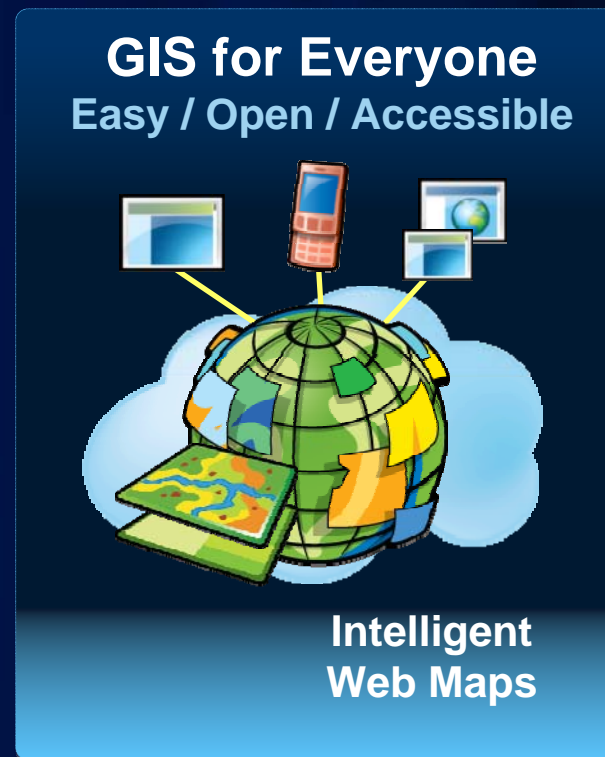
Public Map Sharing



Share Map in Different Topics

Open data platform for maps and geographic information

- Easily create and share maps
- Delivered as intelligent maps
- Access on virtually any device – anyone, anywhere
- Compliments and extends the value of your GIS
- Use within an organization or share with larger communities and/or public

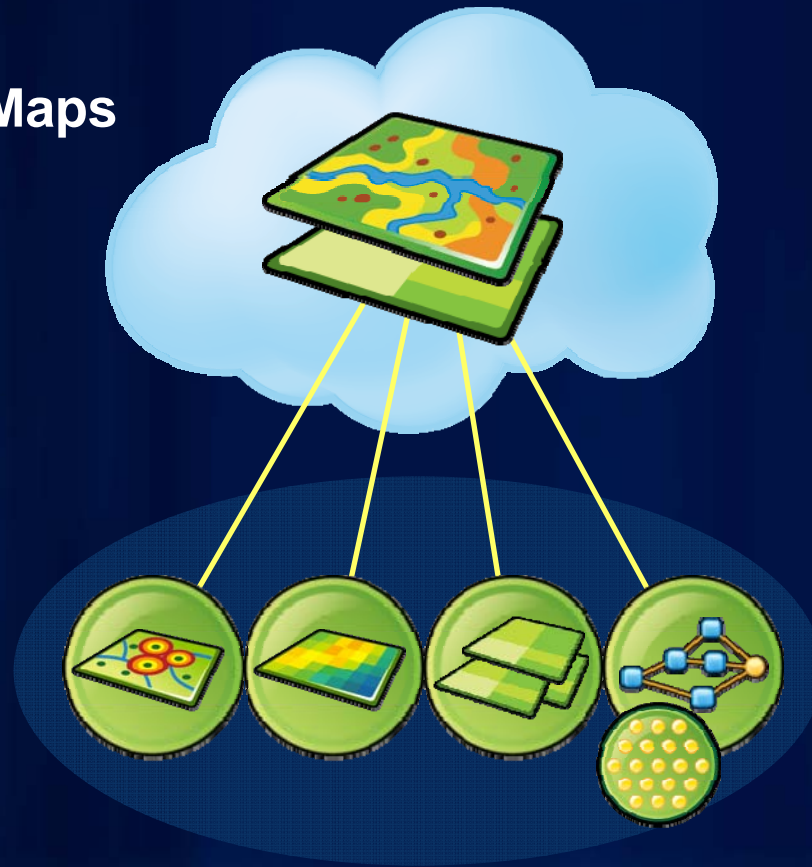


Extend the value and reach of your GIS

Intelligent Maps

Intelligent Maps

Services
And Data



Supporting

- Visualization
- Editing
- Popups
- Analysis
- Time

Upload, Connect and Share

- Open and standards-based
- Use and store geospatial info
 - GIS datasets and services
 - OGC web services - WMS
 - KML & GPX
 - Spreadsheet data (CSV's)
- You decide how it is shared
 - Public/private
 - Embed in web page or blog
 - Links & social networks

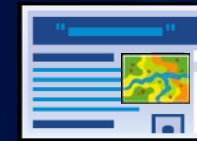


WMS
Map Tiles KML
Maps Images Shapefiles
Geodatabases CSV
Tools and GPS Workflows
Models Features WMTS

Interact with Intelligent Maps Anywhere

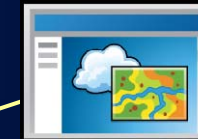
Any Device

Smart Phones



Apps

Tablets



Browsers



Desktop



One Map

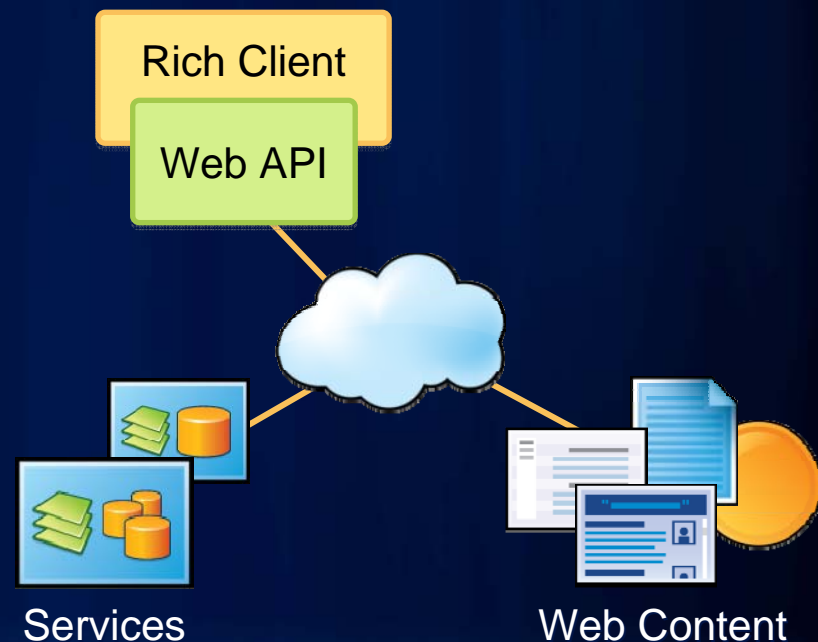


Online Map

Use Webmaps in Applications

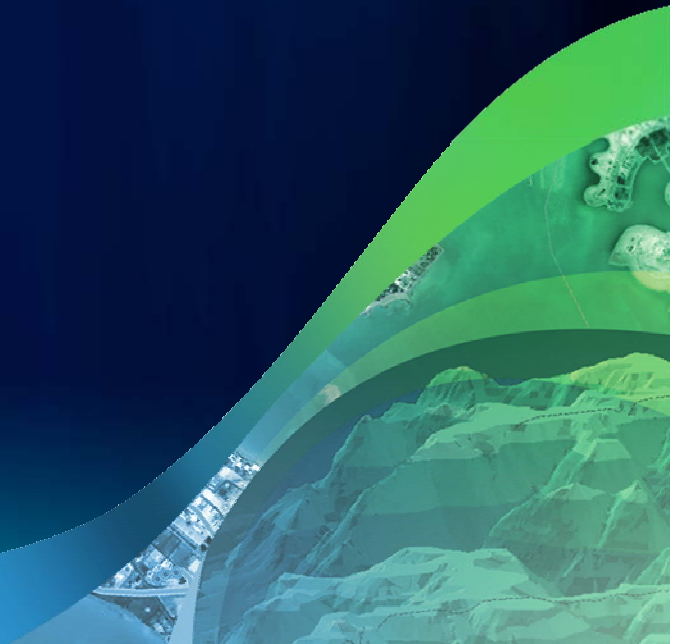
Build rich, interactive apps with mapping and geographic functionality

- Custom web pages
- Web applications
- Stand-alone applications
- Client libraries for building rich GIS applications
 - Javascript
 - Flex
 - Silverlight
 - REST
- Mobile API's



Example

ArcGIS Explorer Online



Basemaps

Demographic Maps

Reference Maps

Specialty Maps

World Ir

Basemaps

Demographic Maps

Reference Maps

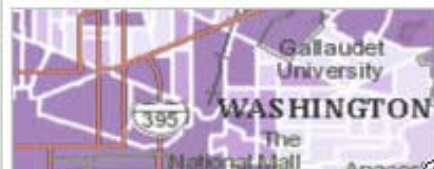
Specialty Maps



USA Average Household Size



USA Daytime Population



USA Diversity Index



Wor

Basemaps

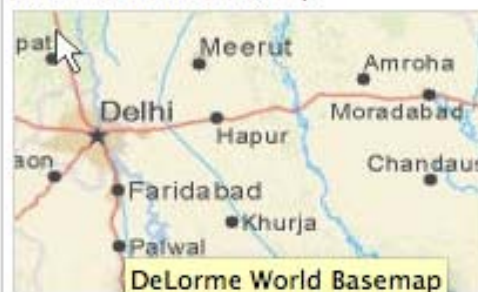
Demographic Maps

Reference Maps

Specialty Maps



DeLorme World Basemap



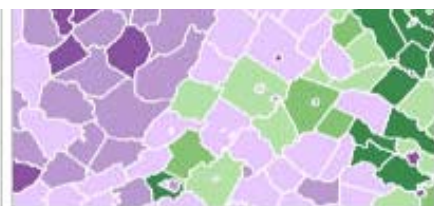
World Navigation Charts

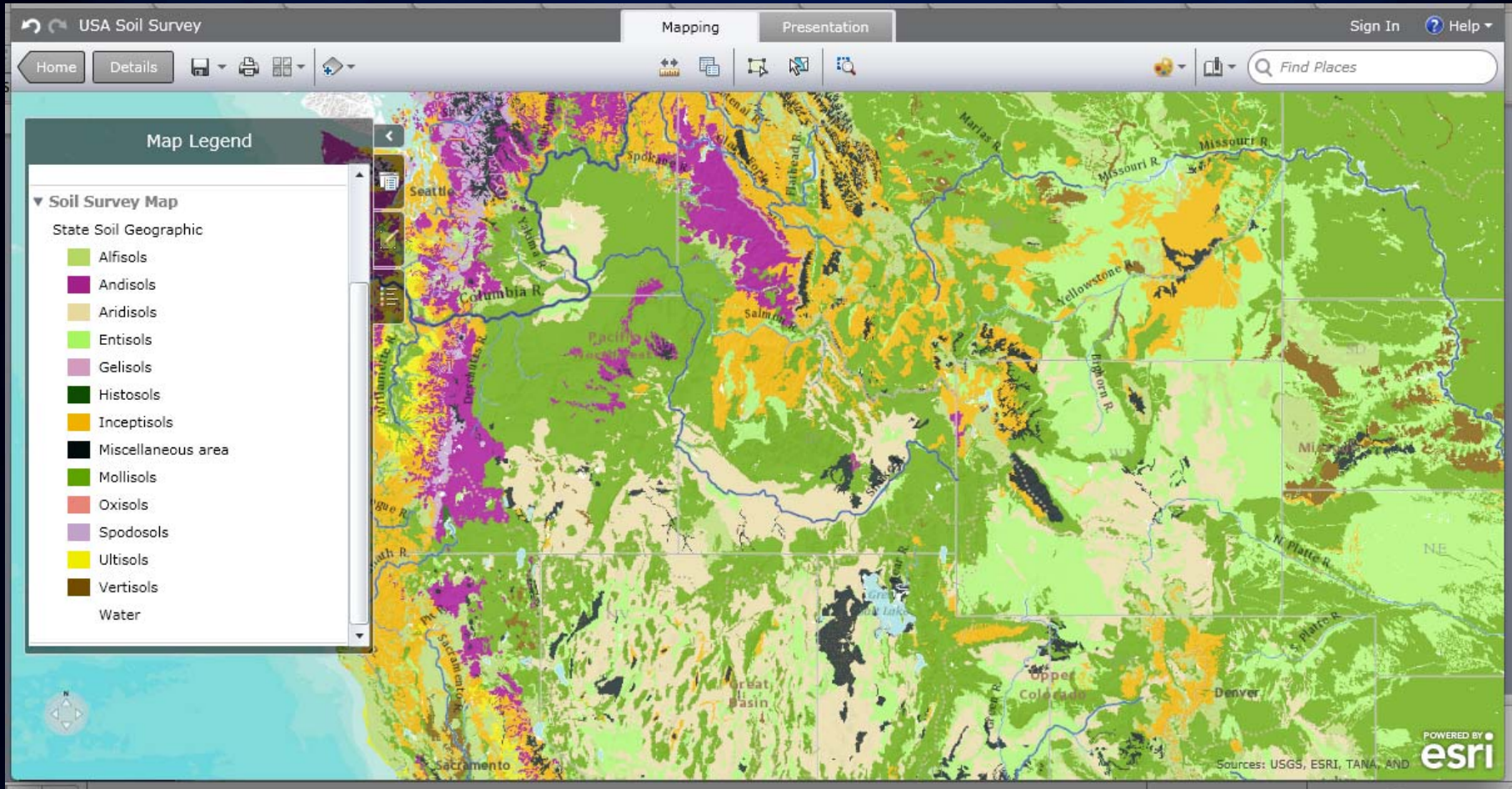


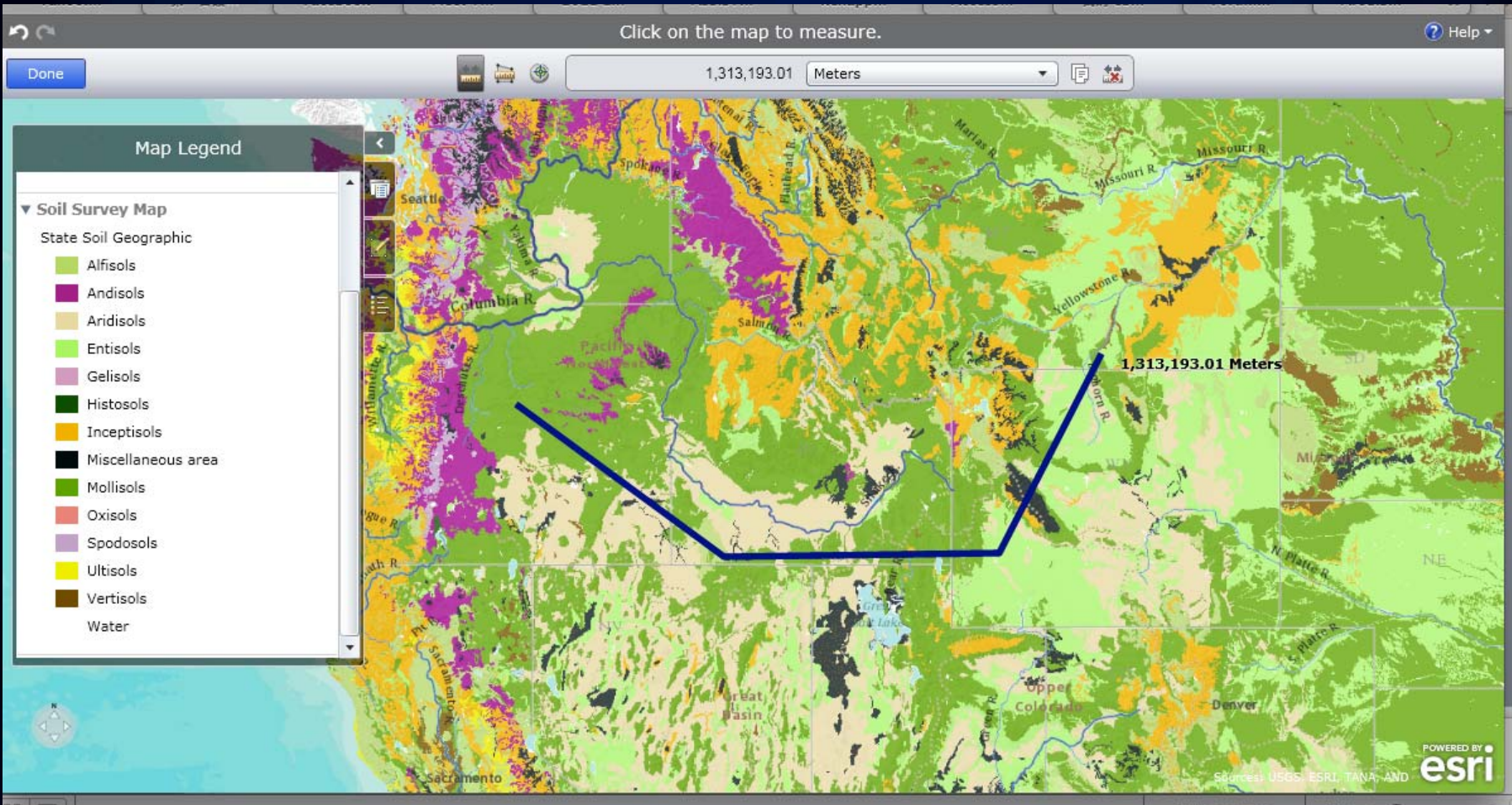
Soil Survey Map



USA







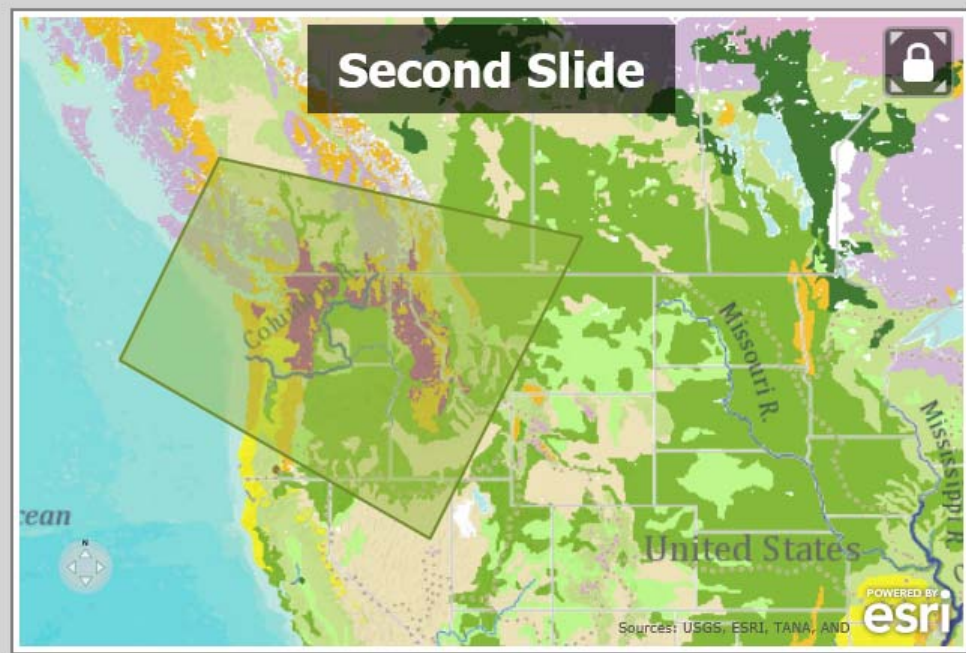
Add Features

Search for feature types

Map Notes

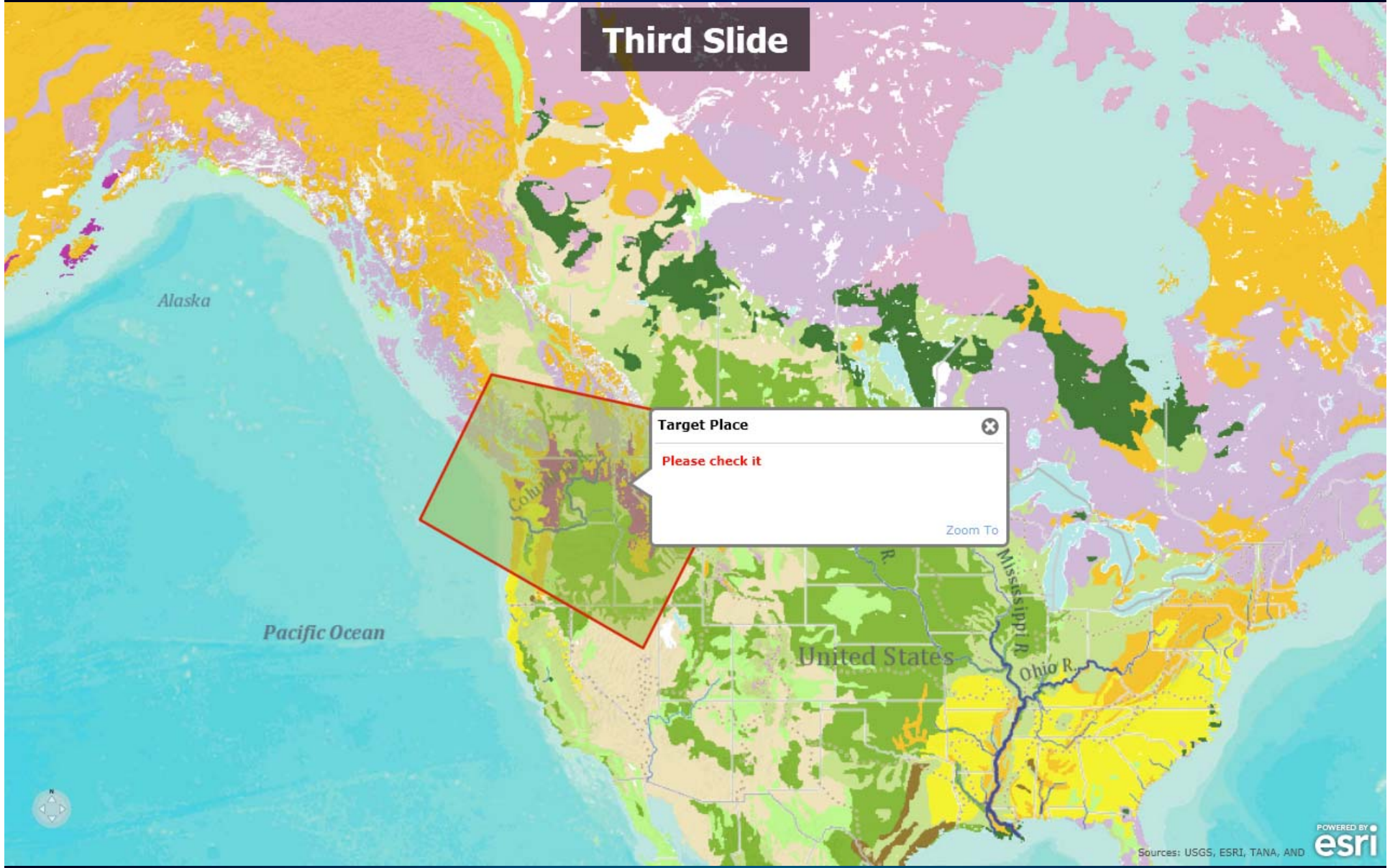
- Stickpin
- Pushpin
- Cross
- Text
- Line
- Freehand Line
- Area
- Triangle
- Rectangle
- Left Arrow
- Right Arrow
- Ellipse

Organize



Slide thumbnails: 1, 2 (selected), 3

Third Slide



The Hong Kong Society for Rehabilitation

Hong Kong Access Guide



Traditional Access Guide Website

The screenshot displays the website's interface. At the top left is the logo for the Hong Kong Society for Rehabilitation's 50th Anniversary. The top right features a navigation bar with links for 'Disclaimer', 'Site Map', and 'Contact Us'. Below this is a secondary navigation bar with categories: 'Background', 'Method of Survey', 'Code and Abbreviations', and 'Criteria used to Determine Accessibility'. A left-hand menu lists various sections, with 'Attractions' currently selected. The main content area is titled 'SURVEY REPORT' and includes a '繁體' (Traditional Chinese) language toggle. It features three main sections: 'Attractions' (with a photo of a water park and links to Markets, Museums, Scenic Spots, Temples, and Theme Parks), 'Shopping & Dining' (with a photo of a restaurant and links to Computer Centres, Food Courts, and Shopping Malls), and 'Other Venues' (with a photo of a modern building and links to Arts and Performance Centres, Churches, and Hong Kong Convention and Exhibition Centres). At the bottom, there are icons for a boat, a car, and an airplane, and a copyright notice for The Hong Kong Society for Rehabilitation.

香港復康會
The Hong Kong Society
for Rehabilitation
50 Anniversary

Disclaimer | Site Map | Contact Us

Background | Method of Survey | Code and Abbreviations | Criteria used to Determine Accessibility

繁體

SURVEY REPORT

Attractions

[Markets](#) | [Museums](#) | [Scenic Spots](#) | [Temples](#) | [Theme Parks](#)

Shopping & Dining


[Computer Centres](#) | [Food Courts](#) | [Shopping Malls](#)

Other Venues

[Arts and Performance Centres](#) | [Churches](#) | [Hong Kong Convention and Exhibition Centres](#)

© The Hong Kong Society for Rehabilitation. All Rights Reserved














List of the Facilities


[Disclaimer](#) | [Site Map](#) | [Contact Us](#)

[Home](#) | [Background](#) | [Method of Survey](#) | [Code and Abbreviations](#) | [Criteria used to Determine Accessibility](#)

REPORT - Shopping & Dining - Shopping Malls (Hong Kong Island)

Shopping Malls – Hong Kong Island [Computer Centres](#) | [Food Courts](#)

| Shopping Mall | Main Entrance | Information Counter | Passage | Lift | Public Toilet | Public Telephone | Car Park | Remarks |
|--|---|---|---|---|---|---|----------|--|
| Admiralty Centre 海富中心 18 Harcourt Road, Central Tel : (852) 2528 4086 Fax : (852) 2865 4844 http://www.mtr.com.hk/eng/properties/urban_lines/admiraltycentre.html |  |  |  |    | NA |  | NA | <ul style="list-style-type: none"> • 4 steps at Drake Street main entrance, wheelchair users can enter via cargo lift at Drake Street • Nearest car park at United Centre • Wheelchair users can enter via pedestrian flyover at Pacific Mall and Queensway Plaza |
| Alexandra House 歷山大廈 中環遮打道18號 18 Chater Road, Central www.hkland.com/commercial/property/hongkong_properties/alexandrahouse/index.html |  | NA |  |    |  | NA | NA | <ul style="list-style-type: none"> • Nearest car park at IFC • Wheelchair users can enter via Ice House Street • No designated lift for passengers with disabilities, wheelchair users can use the cargo lift |

Attractions

Shopping & Dining



Shopping Malls

Times Square

Hotels

Other Venues



Attractions

Shopping & Dining

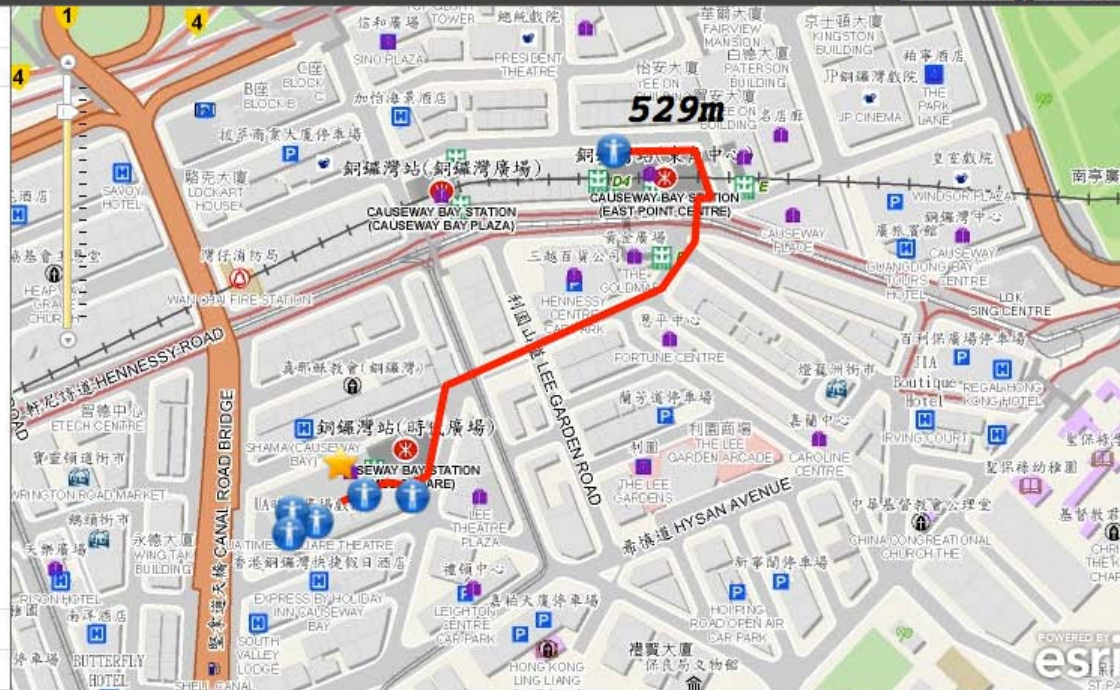


Shopping Malls

Times Square

Hotels

Other Venues



Attractions

Shopping & Dining

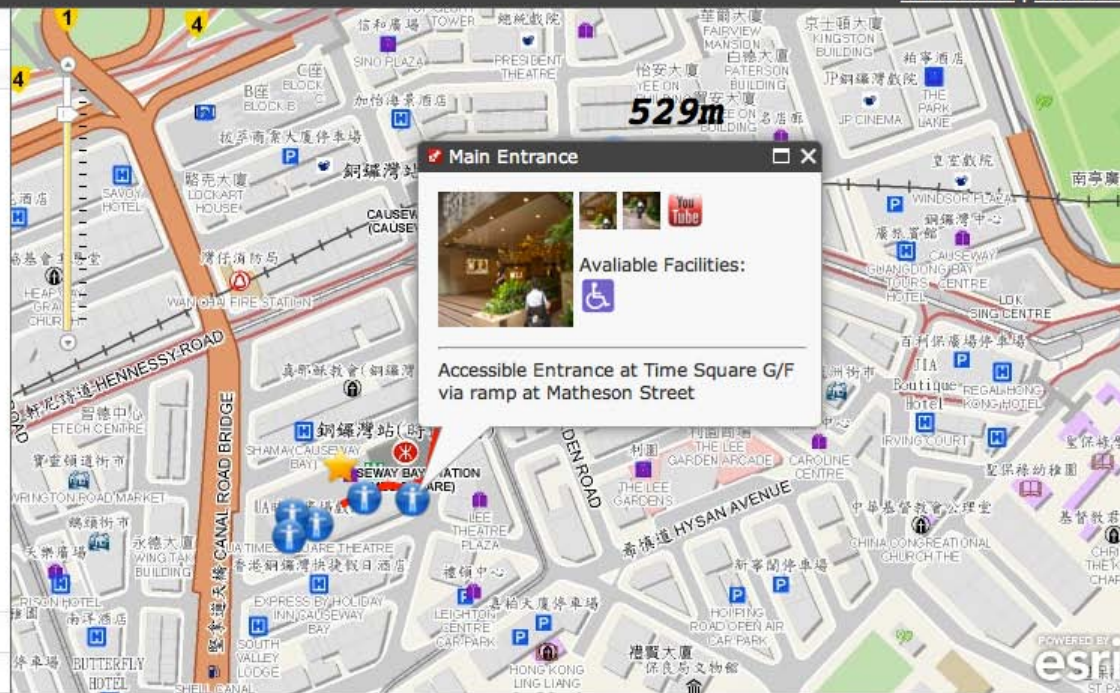


Shopping Malls


Times Square

Hotels


Other Venues



Main Entrance



Available Facilities:



Accessible Entrance at Time Square G/F via ramp at Matheson Street

Q&A



